



PRODUCTION SALE

with Ray Gardner Saturday December 13th, 2025

1:00 pm • Judith Gap, Montana

Selling

100+ Yearling and 2-Year-Old Bulls

100 Commercial Females

Pick of the 2025 Heifer Calves



DVAuction
Broadcasting Real-Time Auctions



Forage Efficient!

GauglerAngus.com



✓ Profitability ✓ Fertility ✓ Performance ✓ Longevity ✓ Fleshability ✓ Feet & Udders ✓ Docility ✓ Moderate Frame



Mark 406-690-1546
Laurie 406-366-4041
Ray 406-351-9283

4 Cemetery Rd
PO Box 195
Judith Gap, MT 59453

Welcome to the **Gaugler Angus Annual Production Sale** on December 13th at the Gap Ranch. As in the years past, we have teamed-up with Ray Gardner to offer a tremendous set of bulls and females. We would like to thank all of you for your interest and continued support of our program. It is such a blessing to be able to work and live in an area that we love and do business with our friends, neighbors, and family.

Our commitment to breeding Black Angus cattle has remained steadfast in producing likekind performance-oriented bulls that are backed by superior maternal genetics. Our goal is to provide genetics that are profitable, functional, and withstand varying environmental pressures for our commercial customers. In order to remain **profitable and sustainable**, we demand that our genetics be efficient at converting grass to red meat with minimal supplementation. Fertility is our first priority with heifers bred for 30 days and cows for 50-60 days. Most of our cows calve out on the range in April and May. We require every cow to raise a calf each year. Nature has a great way of culling cows with poor maternal traits. In addition, we have no tolerance for cattle with poor dispositions, bad feet, or poor teats/udder conformation. The steermates to the sale bulls gained an average of 2.95 lb/day (without creep) and were delivered in mid-October.

This year's offering consists of **90 powerful yearling bulls and 15 of our top two-year-old bulls**, who we have carefully chosen for their genetic merit. In the sale, there will be **20 "cream of the crop" three-year-old bred cows**. These top cows represent our breeding program. They all raised a nice calf that indexed between 96-112% nursing ratio. Moreover, they are bred back in the first 2 weeks of the breeding season starting the end of March. A highlight will be **40 elite bred heifers and 40 fancy heifer calves**. Lot 110 is **Pick of the Heifer Calves** which will allow the buyer to "cherry pick" one 2025-born heifer calf from the entire Gaugler Angus herd consisting of 210 registered Angus heifer calves.

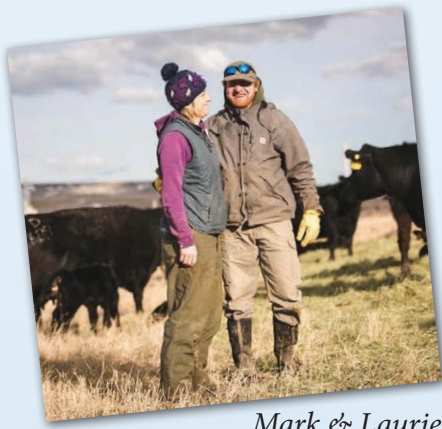
It takes generations to breed this kind of quality, and we are excited for these cattle to go to work for you. For those unable to make it sale day, you are welcome to let us know what you are looking for and we will ensure you receive a bull that meets your specifications. The sale will be broadcast on DVAuction and Frontier Live. You can register and bid using their websites. Videos of the bulls and females will be available the end of November. Our catalog and videos may be viewed on our web page **www.GauglerAngus.com**.

Thanks again for your interest in our program. We look forward to doing business with you. Our satisfaction guarantee and commitment to helping you remain profitable and sustainable is our top priority. Your friendship and business keep us doing what we love. Please stop by and visit or call anytime.

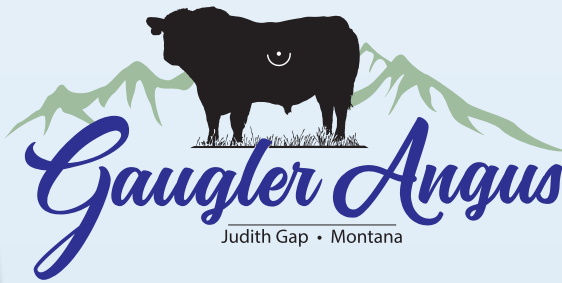
The Gauglers



  **GauglerAngus.com**



Mark & Laurie



BULL SALE

Saturday

December 13, 2025 • 1 pm

Gap Ranch 1 mile West of Judith Gap

4 Cemetery Rd • Judith Gap, MT

AUCTIONEER

Kyle Shobe406-366-0472

REPRESENTATIVES

Kurt Kangas

American Angus Association

Andy Rest

Cattle Business Weekly

Matt Wznick

Western Ag Reporter

Kevin Murnin

Western Livestock Journal

Dan Deichmann

*Deichmann Livestock Brokerage,
Feeder Procurement Representative*

VIEWING

Cattle are available for viewing
anytime at the ranch. Videos of
cattle are available on
GauglerAngus.com
FrontierLiveSale.com
DVAuction.com



DVAuction
Broadcasting Real-Time Auctions

WINTERING & GUARANTEE

Wintering arrangements are available for two year old bulls. The cost is \$500 per head for two year old bulls. **All yearling bulls will be wintered for free until May 1, 2026.** Until the time the buyer takes possession, Gaugler Angus assumes the risk of the bulls. If something should happen to a bull while under our care, buyer will receive a replacement or money back. All wintered bulls will be fertility tested and are guaranteed sound. All bulls are guaranteed to be sound breeders for the first breeding season unless injury is caused by buyer's negligence or an act of God. If a bull needs to be replaced you get a credit minus salvage value at the next year's sale, a replacement if one is available, or your money back minus salvage value. The guarantee does not cover death of the bull or any treatable condition such as foot rot or pink eye.

HOSPITALITY

A beef lunch will be served starting at noon.

TRANSPORTATION

Free bull delivery within the state of Montana. We will assist in facilitating out of state delivery at cost to the buyer. Female delivery is the responsibility of the buyer and must be arranged within 1 week of sale day.

ABSENTEE BIDDING

If you cannot make it on sale day, you are welcome to call

Mark406-690-1546

Laurie406-366-4041

Ray Gardner . .406-351-9283

or one of the sale representatives. You may also bid online at Frontier Live or DVAuction. Complete satisfaction is guaranteed for cattle purchased sight unseen.

TERMS & CONDITIONS

Cattle sell under the terms and conditions suggested by the American Angus Association. Unless previous arrangements are made, terms of the sale are cash. Gaugler Angus retains 1/3 semen interest on every bull selling unless otherwise noted. Buyer receives full possession and salvage value.

Ray &
Cindy



Yearling Bulls

These outstanding bull calves represent the top 15% of our bull calf crop and are chosen from moderate framed cows with easy fleshing ability. As in the past, **we will winter these bulls until May 1st free of charge.** They will be fed a high roughage ration targeting a daily gain of 2.5-3.0 pounds per day. We believe that a high roughage ration and exercise help ensure longevity. We make it a priority to walk through these bulls regularly in order to ensure that they are gentle and easy to handle. Breeding soundness examinations and yearling weights will be taken in April.



S&R MS HONCHO 010



Dam of Lot 2



GA Renovation N278

Reg: 21326958

DOB: 3/26/25

Tattoo: N278

S A V RENOVATION 6822
S&R RENOVATION 6822-257
MF/EBY EVER ENTENSE Y726

SINCLAIR X-PLUS 5XX34
GA MANOR J512
RD MANOR F94

S A V RENOWN 3439
S A V MADAME PRIDE 0151
O C C MISSING LINK 830M
SHADYBROOK EVER ENTENSE 491G
SINCLAIR EMULATION XXP
MISS WIX 2022 HC MC CUMBER
SINCLAIR TIME KEEPER 3BA27
RD MANOR D33

Act. BW	Adj. 205 Wt	ADG	NR	Dam NR
76	775	3.34	109%	3 @ 111%

- Herd bull prospect! This calving ease bull is masculine and loaded with red meat and performance with a weaning ratio of 109% against an outstanding contemporary group. Genomics rank him in the top 15% of the breed for meat tenderness.
- Renovation 257 sire is massively deep-bodied and easy fleshing, designed to produce red meat on grass.
- His dam is feminine with beautiful teats/udder and a production ratio of 3 @ 111%!



GA External Law N138

Reg: 21327018

DOB: 3/15/25

Tattoo: N138

BLAIR'S EXTERNAL LAW
RD EXTERNAL LAW L276
RD ERICA A74

DUFF HONCHO 426
S&R MS HONCHO 010
S&R MS THUNDER 528

DUFF NAPOLEON 232
BAR-E-L ERICA 74A
SINCLAIR TIME UP 9P2
RD SHADY LADY Y519
BAR WICK EUREKA 943 310
DUFF BI 619 LADYPOP 1017
CONNEALY THUNDER
S&R MS CAPITALIST 028-351

Act. BW	Adj. 205 Wt	ADG	NR	Dam NR
85	713	3.07	100%	4 @ 100%

- There is no doubt you will find this stud on sale day. He is unbelievably stout and grabbed our eye from an early age. He's by our herd sire L276 and out of the stunning 010 cow.
- His 528 grandam has been a phenomenal, embryo-producing cow for Ray Gardner. Her offspring have inherited her massive depth of rib, extraordinary growth, and desirable disposition, all while standing on excellent feet and legs. These cattle are designed to shine in any environment.

FRONTIER LIVE SALE

This Sale will be broadcast live on www.frontierlivesale.com. To view a sale,

1. Create an account, if you have already done so skip to next step. To create a new account, click on the word **Registration** in the upper right hand corner. You must fill out the information requested. Then click **Create Account**. An email will be sent to your email account you provided. Please click the link in the email to activate your new account.



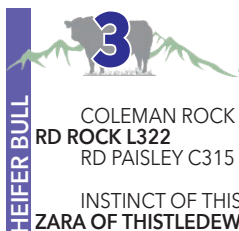
2. Once you click the link, your account will now be activated
 3. At this point, you may click **Continue To Browse Our Site**. This will allow you to view all upcoming auctions.
 4. Once you see the auction you are interested in, click **Get Approved To Bid** for absentee and live bidding.
 5. Please enter your information in the form. Depending on the auctioneer, different information may be requested. Click **I agree to sale terms and conditions**. Congratulations! You are now approved for the auction. Now that you're approved you can participate in the auction and bid on its items.
 6. Login on sale day with the credentials provided at registration.
- Call 866-313-0123 for tech help.

DVAuction
Broadcasting Real-Time Auctions

Can't make the sale?
Let DVAuction bring the sale to you!
Busy during the sale?
Let DVAuction represent your bid!

Visit www.DVAuction.com and Register Today

For General Questions
Please Contact Our Office:
(402) 316-5460 or
support@dvauction.com



HEIFER BULL

GA Rock N419

Reg: 21326971

DOB: 3/31/25

Tattoo: N419

COLEMAN ROCK 7200
RD ROCK L322
RD PAISLEY C315

INSTINCT OF THISTLEDEW 5B12
ZARA OF THISTLEDEW 911
ZARA OF THISTLEDEW 5C2

O C C JUNEAU 807J
COLEMAN DONNA 714
SINCLAIR CCR 2D53
BASIN CHLOE 3426
DUFF BASIC INSTINCT 6501
BLACKBIRD OF THISTLEDEW 2BX3
COLEMAN CHARLO 0256
ZARA OF THISTLEDEW 3DE3

Act. BW	Adj. 205 Wt	ADG	NR	Dam NR
79	822	3.60	118%	5 @ 100%

- Impressive length of body and style in this Coleman Rock grandson. He has caught the eye of visitors throughout the summer. Suitable for use on heifers.
- G91 dam has a powerful, easy fleshing phenotype with excellent teats and udder.



GA External Law N743

Reg: 21327059

DOB: 4/15/25

Tattoo: N743

BLAIR'S EXTERNAL LAW
RD EXTERNAL LAW L276
RD ERICA A74

S&R CHISUM 213
S&R CHISUM 213-531
S&R MS PREDESTINED 834

DUFF NAPOLEON 232
BAR-E-L ERICA 74A
SINCLAIR TIME UP 9P2
RD SHADY LADY Y519
S CHISUM 6175
S&R MS EMBLAZON 431
G A R PREDESTINED
S&R MS EMBLAZON 413

Act. BW	Adj. 205 Wt	ADG	NR	Dam NR
85	819	3.47	113%	9 @ 99%

- Powerful, huge-hipped External Law herd bull. These External Law bulls are absolutely ripped with muscle and style.
- Longevity, maternal power, and performance are stacked in this pedigree.



GA 4Real N174

Reg: 21326954

DOB: 3/19/25

Tattoo: N174

DUFF-JC 4REAL 16250
S&R 4REAL 214
S&R MS THUNDER 422

COLEMAN RESOURCE 708
RD MANOR J491
OX BOW MANOR 344

DUFF NAPOLEON 232
DUFF AMIGO 927K JUANADA 071
CONNEALY THUNDER
S&R MS TRANSMITTER 023
S A V RESOURCE 1441
COLEMAN DONNA 376
OX BOW MISSING LINK 1290
OX BOW MANOR 087

Act. BW	Adj. 205 Wt	ADG	NR	Dam NR
82	851	3.68	120%	3 @ 110%

- Performance king with 205 day weight of 851 lb and nursing ratio of 120%! Genomics rank him in the top 15% of the breed for meat tenderness.
- 708 dam is an absolute gem with production ratio of 3 @ 110%. She is everything we look for in a productive cow--fertile, moderate, easy-fleshing, and feminine with near perfect teats and udder.



GA Glacier N407

Reg: 21327035

DOB: 3/29/25

Tattoo: N407

COLEMAN GLACIER 041
RD GLACIER L149
SAW BANKNOTE EMPRESS 702

S&R CORTEZ 045
S&R MS CORTEZ 045-2101
S&R MS CHAPS 4095-829

S A V RENOWN 3439
COLEMAN DONNA 439
BROOKING BANK NOTE 4040
SAW EMBLAZON 419 921 140
O C C CORTEZ 819C
S&R MS CEDAR RIDGE 1V-403
ELLINGSON CHAPS 4095
S&R MS FOCUS 106

Act. BW	Adj. 205 Wt	ADG	NR	Dam NR
82	795	3.40	113%	2 @ 103%

- This big time herd bull is an absolute meat wagon. He is masculine and loaded with performance, gaining 3.40 pounds per day on his dam and native grass. Genomics rank him in the top 20% of the entire breed for weaning weight, yearling weight, and ribeye area.
- The Cortez daughters certainly are productive!



GA Resource N226

Reg: 21326955

DOB: 3/24/25

Tattoo: N226

COLEMAN RESOURCE 708
RD RESOURCE L282
RD CHLOE F473

COLEMAN BRAVO 6313
RD EILEEN H164
RD EILEEN C191

S A V RESOURCE 1441
COLEMAN DONNA 376
SINCLAIR SUN DIAL 5TL15
RD CHLOE A310
COLEMAN CHARLO 0256
COLEMAN DONNA 714
OX BOW FINAL ANSWER 1304
RD EILEEN Y4

Act. BW	Adj. 205 Wt	ADG	NR	Dam NR
82	742	3.22	105%	4 @ 105%

- Soggy, robust performance bull.
- His dam is a quiet, deep-bodied Bravo daughter that consistently raises top calves. Maternal brother was sale feature in last year's sale going to Randy Ridgeway.



S&R MS RELOAD411C-938



Dam of Lot 8



GA Resource N817

Reg: 21327065

DOB: 4/18/25

Tattoo: N817

COLEMAN RESOURCE 708
RD RESOURCE L282
RD CHLOE F473

SITZ RELOAD 411C
S&R MS RELOAD411C-938
S&R MS CEDAR RIDGE 1V-403

S A V RESOURCE 1441
COLEMAN DONNA 376
SINCLAIR SUN DIAL 5TL15
RD CHLOE A310

S A V RESOURCE 1441
SITZ FOREVER LADY 612T
COLE CREEK CEDAR RIDGE 1V
S&R MS FINAL ANSWER 224

Act. BW	Adj. 205 Wt	ADG	NR	Dam NR
95	796	3.40	111%	5 @ 103%

- Loads of power and dimension in this docile 708 grandson with a nursing ratio of 111! Genomics rank heifer pregnancy in the top 13% of the breed.
- Beautiful Reload dam is a sleek-fronted, wide-bodied, smooth-made female with an immense amount of rib cage.

ROCKING-DOT-G761



Dam of Lot 9



GA Emulation N367

Reg: Not Reg

DOB: 3/29/25

Tattoo: N367

R44 EMULATION 7756
R44 EMULATION 0354
R44 EISA EVERGREEN 354

OX BOW CHARLO 4316
ROCKING DOT G761
ROCKING DOT 220

SINCLAIR EMULATION XXP
OX BOW BLACKCAP 756
GDAR GAME DAY 449
SITZ RLS EISA EVERGREEN 715R

COLEMAN CHARLO 0256
OX BOW MANOR 277
ROCKING DOT COMMERCIAL
ROCKING DOT U356

Act. BW	Adj. 205 Wt	ADG	NR	Dam NR
85	777	3.38	110%	5 @ 102%

- Wow! This young stud is the complete package. It's hard to find Angus cattle with this kind of thickness across the top-line and hindquarter muscle expression.
- Angus model dam is absolutely exquisite! She puts it all together in a wedge-shaped package with attractive head and neck extension and deep-ribbed with perfect teats and udder. Grandam was a favorite on the ranch with production 11 @ 106%.



Lot
10



GA Mission N170

Reg: 21361158

DOB: 3/18/25

Tattoo: N170

COLEMAN CHARLO 0256
COLEMAN MISSION 1447
COLEMAN DONNA 439

COLEMAN BRAVO 6313
S&R MS BRAVO 031
S&R MS AVIATOR 542-857

O C C PAXTON 730P
BOHI ABIGALE 6014
GDAR GAME DAY 449
COLEMAN DONNA 714
COLEMAN CHARLO 0256
COLEMAN DONNA 714
MUSGRAVE AVIATOR
S&R MS STUR-D 522

Act. BW	Adj. 205 Wt	ADG	NR	Dam NR
75	740	3.24	106%	4 @ 101%

- Incredible length of spine and red meat in this top Mission son. This is the kind of pedigree you can count on to add maternal, efficiency, red meat, and performance. Suitable for use on heifers.



Lot
10

Yearling Bulls



11 GA External Law N478

Reg: 21326979 DOB: 4/3/25 Tattoo: N478

BLAIR'S EXTERNAL LAW
RD EXTERNAL LAW L99
SAW BANKNOTE EMPRESS 702

SINCLAIR RITO D 3RD1
RD ERICA G723
RD ERICA A74

DUFF NAPOLEON 232
BAR-E-L ERICA 74A
BROOKING BANK NOTE 4040
SAW EMBLAZON 419 921 140

SINCLAIR BOSS
SINCLAIR E BLKBIRD 9XP9 7RR3
SINCLAIR TIME UP 9P2
RD SHADY LADY Y519

Act. BW	Adj. 205 Wt	ADG	NR	Dam NR
80	777	3.40	111%	5 @ 100%

- A power-packed, easy-fleshing, beef producing stud that should work on most heifers. No surprise here with 3RD1 as the maternal grandsire, who is in the pedigree of many of our best cows.
- Maternal grandam A74 is the dam of our herd bull L276. She has a sweetheart disposition, attractive wedge-shape pattern, ideal teats, udder, and feet and is still in production at 13 years old.

12 GA External Law N249

Reg: 21327020 DOB: 3/25/25 Tattoo: N249

BLAIR'S EXTERNAL LAW
RD EXTERNAL LAW L276
RD ERICA A74

S A V EXTENSION 6856
S&R MS EXTENSION 6856-905
COLEMAN DONNA 0298

DUFF NAPOLEON 232
BAR-E-L ERICA 74A
SINCLAIR TIME UP 9P2
RD SHADY LADY Y519

SINCLAIR EMULATION XXP
S A V BLACKCAP MAY 4136
O C C JUNEAU 807J
COLEMAN DONNA 732

Act. BW	Adj. 205 Wt	ADG	NR	Dam NR
88	734	3.15	103%	5 @ 99%

- Balanced beef bull with large scrotal. Genomics rank him in top 15% for ribeye area.
- Dam is an attractive Extension X Juneau cow with excellent teats and udder.

13 GA External Law N402

Reg: 21327033 DOB: 3/31/25 Tattoo: N402

BLAIR'S EXTERNAL LAW
RD EXTERNAL LAW L99
SAW BANKNOTE EMPRESS 702

R44 EMULATION 7756
R44 EISA EVERGREEN 061
R44 EISA EVERGREEN 551

DUFF NAPOLEON 232
BAR-E-L ERICA 74A
BROOKING BANK NOTE 4040
SAW EMBLAZON 419 921 140

SINCLAIR EMULATION XXP
OX BOW BLACKCAP 756
O C C PAXTON 730P
OX BOW EISA EVERGREEN 290

Act. BW	Adj. 205 Wt	ADG	NR	Dam NR
80	745	3.24	106%	4 @ 103%

- Strong performance bull that is large scrotal and docile. This kind are hard to find in our industry - the kind that will leave scale smashing steer calves and females that are productive, low maintenance, and will make you profitable for the long run.

14 GA Rock N241

Reg: 21326956 DOB: 3/24/25 Tattoo: N241

COLEMAN ROCK 7200
RD ROCK L322
RD PAISLEY C315

COLEMAN BRAVO 6313
RD DIXIE H210
RD DIXIE X465

O C C JUNEAU 807J
COLEMAN DONNA 714
SINCLAIR CCR 2D53
BASIN CHLOE 3426
COLEMAN CHARLO 0256
COLEMAN DONNA 714
GA EMULATION TRAVELER 265
STEVENSON DIXIE 2847

Act. BW	Adj. 205 Wt	ADG	NR	Dam NR
80	743	3.23	105%	4 @ 101%

- Designed to make females that last! Grandam production 14 @ 106% and great grandam production 15 @ 103%.



Libby's first year of 4-H



Libby and Holly



Lila at Central Montana Fair



S&R-MS-4-Real-163



Dam of Lot 15

BLAIR'S-ERICA-267F



Dam of Lot 16



GA External Law N347

Reg: 21327029

DOB: 3/29/25

Tattoo: N347

BLAIR'S EXTERNAL LAW
RD EXTERNAL LAW L99
SAW BANKNOTE EMPRESS 702

DUFF NAPOLEON 232
BAR-E-L ERICA 74A
BROOKING BANK NOTE 4040
SAW EMBLAZON 419 921 140

DUFF-JC 4REAL 16250
S&R MS 4 REAL 163
S&R MS AVIATOR 542-700

DUFF NAPOLEON 232
DUFF AMIGO 927K JUANADA 071
MUSGRAVE AVIATOR
S&R MS PAXTON 706-944

Act. BW	Adj. 205 Wt	ADG	NR	Dam NR
85	839	3.60	118%	3 @ 111%

- Loads of power and dimension in this bull with a nursing ratio of 118%.
- His dam is a productive 4Real daughter with an outstanding production record of 3 @ 111%. Aviator grandam is still in production with 7 @ 101% nursing ratio.



GA Hi-Country N625

Reg: Reg Pending

DOB: 4/9/25

Tattoo: N625

ELLINGSON HI-RANGE
HF HI-COUNTRY 7L
HF TIBBIE 21J

ELLINGSON RANGELAND
EA EMBLYNETTE 9473
SCHIEFELBEIN SHOWMAN 338
HF TIBBIE 215B

DUFF NAPOLEON 232
BLAIR'S ERICA 267F
BAR-E-L ERICA 74A

DUFF DISTINCTION 9105
DUFF EUR 443 MERLE 808
BAR-E-L NATURAL LAW 52Y
HF ERICA 339T

Act. BW	Adj. 205 Wt	ADG	NR	Dam NR
85	777	3.37	108%	ET

- Embryo transfer bull by HF Hi-Country who was the top selling \$185,000 sire sold by Hamilton Farms in 2024. Dam is 267F, a full sister to Blairs External Law 266F, out of the 74A cow who was the Grand Champion Female at the 2015 Canadian Western Agribition. The 74A progeny are rising to the top across the US and Canada. 267F, owned by Golden Oak Livestock, is a load of red meat with added volume, capacity, and extreme eye appeal.
- This will be the only one of this flush that we offer for sale at this time. He ranks in the top 15% of the breed for weaning weight, yearling weight, scrotal, docility, and meat tenderness.



Lot
15

Yearling Bulls

- 6 -

Yearling Bulls



GA Honcho N796

Reg: 21327010 DOB: 4/17/25 Tattoo: N796

DUFF HONCHO 426
RD HONCHO J66
RD DONNA G337

SINCLAIR CCR 2D53
RD PETUNIA D127
RD PETUNIA Y219

BAR WICK EUREKA 943 310
DUFF BI 619 LADYPOP 1017
REDLAND RANGER 164
DONNA OF THISTLEDEW 1EN1
SINCLAIR FORTUNATE SON
MAYMONT CALLIE JANET 4512
ESHLMANS MAX TOT/861
G A COMMODORE PETUNIA 1375

Act. BW	Adj. 205 Wt	ADG	NR	Dam NR
96	789	3.37	110%	8 @ 107%

- Stellar phenotype and performance in this J66 son who ratioed at 110%.
- His sire is one of our outstanding Honcho sons that we have retained for our herd bull battery. These Honcho's flat light it up! We feel they offer eye appealing, deep-bodied, easy fleshing, highly marketable offspring that are incredibly valuable.

S&R MS CHISUM 213-927



Dam of Lot 18



GA Honcho N537

Reg: 21327043 DOB: 4/5/25 Tattoo: N537

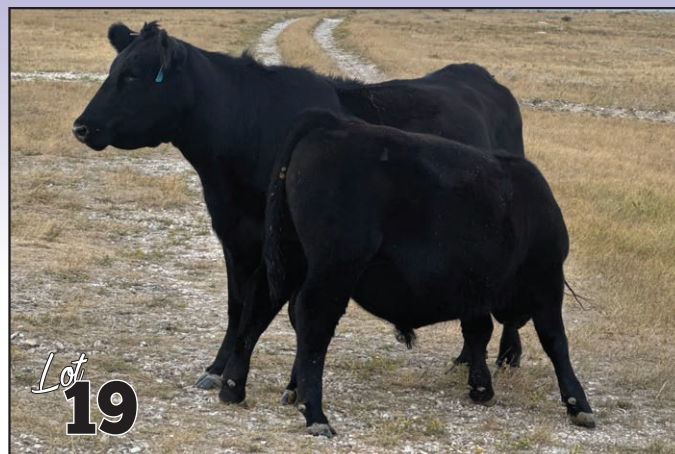
DUFF HONCHO 426
RD HONCHO J66
RD DONNA G337

S&R CHISUM 213
S&R MS CHISUM 213-927
S&R MS PAXTON 706-956

BAR WICK EUREKA 943 310
DUFF BI 619 LADYPOP 1017
REDLAND RANGER 164
DONNA OF THISTLEDEW 1EN1
S CHISUM 6175
S&R MS EMBLAZON 431
S&R PAXTON 706
S&R MS TRAVLER N341

Act. BW	Adj. 205 Wt	ADG	NR	Dam NR
78	771	3.38	110%	5 @ 107%

- Same sire and weaning performance as Lot 17 - outstanding! The Honcho's are extremely maternal with an extraordinary ability to produce pounds on grass.
- Maternal brother who was the front cover sale feature last year sold to Nash Land and Livestock, and another maternal brother (also out of a Honcho son) went to Gus and Laura Mundt in 2023. 927 dam doesn't miss!



GA Do It All N151

Reg: 21354545 DOB: 3/16/25 Tattoo: N151

O C C DO IT ALL 656D
REDLAND DO IT ALL 68
REDLAND LASS 570

COLEMAN RENOWN 0398
RD CHLOE L367
RD CHLOE F151

O C C ZODIAC 655Z
O C C DIXIE ERICA 827A
GDAR GAME DAY 449
REDLAND LASS 616
S A V RENOWN 3439
COLEMAN DONNA 7180
SINCLAIR RITO D 3RD1
BASIN CHLOE 9403

Act. BW	Adj. 205 Wt	ADG	NR	Dam NR
86	815	3.22	121%	1 @ 121%

- This outstanding bull ratioed 121% on a first calf heifer.
- Dam is a nice quiet Coleman Renown daughter who knocked it out of the park with this one.



GA Honcho N816

Reg: 21327064 DOB: 4/18/25 Tattoo: N816

DUFF HONCHO 426
RD HONCHO J66
RD DONNA G337

ELLINGSON CHAPS 4095
S&R MS CHAPS 4095-834
S&R MS CHISUM 213-476

BAR WICK EUREKA 943 310
DUFF BI 619 LADYPOP 1017
REDLAND RANGER 164
DONNA OF THISTLEDEW 1EN1
S A V RESOURCE 1441
E A BLACKCAP 0360
S&R CHISUM 213
S&R MS PREDOMINANT 4438-001

Act. BW	Adj. 205 Wt	ADG	NR	Dam NR
85	738	3.18	104%	6 @ 103%

- Forage efficient bull that is next-level good. Study his type and it is evident that this bull is designed to turn grass into red meat. We are really high on his home raised sire J66 who is an absolute load of beef in a moderate, low input style that we strive to produce.
- Grandam still in production with 10 @ 104% nursing ratio.



S&R-MS-BRAVO-6113-102



Dam of Lot 21



GA External Law N844

Reg: 21327069

DOB: 4/19/25

Tattoo: N844

BLAIR'S EXTERNAL LAW
RD EXTERNAL LAW L85
SAW BANKNOTE EMPRESS 702

DUFF NAPOLEON 232
BAR-E-L ERICA 74A
BROOKING BANK NOTE 4040
SAW EMBLAZON 419 921 140

COLEMAN BRAVO 6313
S&R MS BRAVO 6113- 102
S&R MS THUNDER 528

COLEMAN CHARLO 0256
COLEMAN DONNA 714
CONNEALY THUNDER
S&R MS CAPITALIST 028-351

Act. BW	Adj. 205 Wt	ADG	NR	Dam NR
84	834	3.59	117%	3 @ 115%

- Youngest bull in the sale, but you wouldn't know it with 834 pound 205-day weight. Sheer power in this top performing External Law son with 117% nursing ratio.
- Genomics rank him in the top 25% of the breed for weaning weight and top 1% for scrotal.
- Dam has tremendous production with 3 @ 115% nursing ratio. Really no surprises here with the 528 matriarch and Coleman Bravo in her pedigree.

ROCKING-DOT-G315



Dam of Lot 22



GA 4Real N838

Reg: Not Reg

DOB: 4/19/25

Tattoo: N838

DUFF-JC 4REAL 16250
S&R 4REAL 210
S&R MS THUNDER 422

DUFF NAPOLEON 232
DUFF AMIGO 927K JUANADA 071
CONNEALY THUNDER
S&R MS TRANSMITTER 023

O C C TREMENDOUS 619T
ROCKING DOT G315
ROCKING DOT E571

O C C EMBLAZON 854E
O C C DIXIE ERICA 960H
OX BOW CHARLO 4316
ROCKING DOT B605

Act. BW	Adj. 205 Wt	ADG	NR	Dam NR
86	842	3.69	120%	5 @ 107%

- Tremendous rib shape and volume in this stout bull.
- Dam is young O C C Tremendous cow that is a deep ribbed, easy fleshing female with excellent teats and udder. Grandam still in production with 7 @ 106% nursing ratio.



Kaydin checking out new bull development yard



GA 4Real N191

Reg: 21327019

DOB: 3/21/25

Tattoo: N191

DUFF-JC 4REAL 16250
S&R 4 REAL 202
S&R MS FINAL ANSWER 211

DUFF NAPOLEON 232
DUFF AMIGO 927K JUANADA 071
S A V FINAL ANSWER 0035
S&R MS PAXTON 706-945

DUFF HONCHO 426
S&R MS HONCHO 037
S&R MS CHAPS 4095-829

BAR WICK EUREKA 943 310
DUFF BI 619 LADYPOP 1017
ELLINGSON CHAPS 4095
S&R MS FOCUS 106

Act. BW	Adj. 205 Wt	ADG	NR	Dam NR
84	707	3.04	99%	4 @ 98%

- Value-added eye appeal, extra length of spine, and soundness in this top 4Real son. Genomics for dry matter intake in the top 10% of the breed and top 20% for ribeye area. This bull is a tick more nervous.
- Nice Honcho dam is angular and wedge-shaped with an attractive feminine profile.



GA 4Real N536

Reg: 21326983

DOB: 4/5/25

Tattoo: N536

DUFF-JC 4REAL 16250
S&R 4 REAL 202
S&R MS FINAL ANSWER 211

DUFF NAPOLEON 232
DUFF AMIGO 927K JUANADA 071
S A V FINAL ANSWER 0035
S&R MS PAXTON 706-945

SINCLAIR SUN DIAL 5TL15
GA PRIMROSE F172
GA YELLOW PRIMROSE Y87

SINCLAIR TIMELESS 8BA4
SINCLAIR C PRIDE 3RC31 7X34
GA EMULATION TRAVELER 26S
GA PRIMROSE YELLOWSTONE 655

Act. BW	Adj. 205 Wt	ADG	NR	Dam NR
80	712	3.08	101%	6 @ 96%

- Meat wagon! Excellent bull calf by 202 herd bull (4Real) and out of Sinclair Timeless/Entrepreneur/Emulation bred cow. This bull ranks in the top 4% of the entire breed for dry matter intake and top 1% for meat tenderness.
- Grandam has perfect feet, teats, and udder and is still in production with 13 @ 102%!



Lot
24

S&R-4-REAL-202

Sire of Lots 23, 24, 25, 68, 71, 73, 82, 84, and 90

**GA 4Real N317**

Reg: 21327027

DOB: 3/27/25

Tattoo: N317

DUFF-JC 4REAL 16250
S&R 4 REAL 202
 S&R MS FINAL ANSWER 211

ZWT SUMMITT 6507
S&R MS SUMMITT 6507-915
 S&R MS PAXTON 186 - 920

DUFF NAPOLEON 232
 DUFF AMIGO 927K JUANADA 071
 S A V FINAL ANSWER 0035
 S&R MS PAXTON 706-945
 S A V RENOWN 3439
 COLEMAN DONNA 714
 S&R OCC PAXTON 920
 S&R MS EMBLAZON 2772- 450

Act. BW	Adj. 205 Wt	ADG	NR	Dam NR
84	741	3.21	105%	5 @ 101%

- Stylish bull with balance and eye appeal. Genomics rank him in the top 25% of the breed for ribeye area.
- Dam is an attractive Summit daughter with excellent teats and udder.

**GA Rito N18**

Reg: 21406161

DOB: 3/7/25

Tattoo: N18

S A V RENOWN 3439
IDEAL 0026 RITO OF REN
 IDEAL 7005 OF 0116 ERILOU

S&R CORTEZ 047
GA FANNY L645
 S&R MS LONGEVITY 556Z-654

RITO 707 OF IDEAL 3407 7075
 S A V BLACKCAP MAY 4136
 COLEMAN EMBLAZON 0116
 IDEAL 5724 OF 9524 ERILOU
 O C C CORTEZ 819C
 S&R MS THUNDER 412-587
 SITZ LONGEVITY 556Z
 S&R MS PAXTON 814

Act. BW	Adj. 205 Wt	ADG	NR	Dam NR
74	782	3.12	117%	1 @ 117%

- Heifer bull with impressive body shape and hip by 0026 and out of a first calf heifer. Calves by him should come easy. Genomics rank him in the top 7% of breed for ribeye area.
- Dam is a Cortez daughter that is a sleek fronted, wide-bodied, smooth made female with an immense amount of rib cage. She is really off to a tremendous start with a nursing ratio of 117% on her first calf! Grandam still in production with 8 @ 101% nursing ratio.

**GA Renovation N565**

Reg: 21327046

DOB: 4/9/25

Tattoo: N565

S A V RENOVATION 6822
S&R RENOVATION 6822-257
 MF/EBY EVER ENTENSE Y726

DUFF HONCHO 426
S&R MS HONCHO 169
 R44 PRIDE 450

S A V RENOWN 3439
 S A V MADAME PRIDE 0151
 O C C MISSING LINK 830M
 SHADYBROOK EVER ENTENSE 491G
 BAR WICK EUREKA 943 310
 DUFF BI 619 LADYPOP 1017
 MC CUMBER 4X13 EXTRA 077
 OX BOW PRIDE 5161

Act. BW	Adj. 205 Wt	ADG	NR	Dam NR
82	730	3.09	101%	3 @ 97%

- Masculine and stout phenotype here that is tough to fault. Not a lot of guess work with Renovation/Missing Link/Honcho/4X13 in the pedigree.
- We flushed the 450 grandam this year. Ray was fortunate to acquire her from Bryan Pike several years ago. She is a deep-ribbed outstanding producer with production of 10 @ 107% and has near perfect teats, udder, and feet.

**GA Trendsetter N488**

Reg: 21328381

DOB: 4/3/25

Tattoo: N488

REDLAND TRENDSETTER 1869
RD TRENDSETTER L84
 S&R MS THUNDER 528

SITZ LONGEVITY 556Z
S&R MS LONGEVITY 556Z-671
 S&R MS INDUSTRY 926

O C C DO IT ALL 656D
 REDLAND BEEBE QUEENMERE 3114
 CONNEALY THUNDER
 S&R MS CAPITALIST 028-351
 CONNEALY FINAL PRODUCT
 SITZ PRIDE 625W
 CONNEALY INDUSTRY 5634
 S&R MS EMBLAZON 437

Act. BW	Adj. 205 Wt	ADG	NR	Dam NR
89	783	3.38	110%	8 @ 100%

- If you're in need of a real cow bull with tons of power, you will love this bull. His genomics rank him in the top 20% of the breed for weaning weight.
- Dam is an attractive Longevity daughter with 8 @ 100% nursing ratio.

**GA Glacier N259**

Reg: 21327021

DOB: 3/25/25

Tattoo: N259

COLEMAN GLACIER 041
RD GLACIER L149
 SAW BANKNOTE EMPRESS 702

DUFF-JC 4REAL 16250
S&R MS 4REAL 233
 S&R MS CORTEZ 043

S A V RENOWN 3439
 COLEMAN DONNA 439
 BROOKING BANK NOTE 4040
 SAW EMBLAZON 419 921 140
 DUFF NAPOLEON 232
 DUFF AMIGO 927K JUANADA 071
 O C C CORTEZ 819C
 S&R MS CHISUM 6175-366

Act. BW	Adj. 205 Wt	ADG	NR	Dam NR
94	716	2.85	97%	2 @ 101%

- Serious amount of muscle and red meat in this Glacier bull. He was one that caught our eye at an early age with his masculine herd bull presence.
- The dam is a young easy fleshing 4Real X Cortez cow who has a bright future ahead of her. Grandam still in production with 4 @ 99%.

**GA Rito N126**

Reg: 21326953

DOB: 3/14/25

Tattoo: N126

S A V RENOWN 3439
IDEAL 0026 RITO OF REN
 IDEAL 7005 OF 0116 ERILOU

R44 EMULATION 0767
GA EISA EVERGREEN L13
 R44 EISA EVERGREEN 162

RITO 707 OF IDEAL 3407 7075
 S A V BLACKCAP MAY 4136
 COLEMAN EMBLAZON 0116
 IDEAL 5724 OF 9524 ERILOU
 R44 EMULATION 7756
 R44 EISA EVERGREEN 767
 R44 EMULATION 7756
 R44 EISA EVERGREEN 755

Act. BW	Adj. 205 Wt	ADG	NR	Dam NR
76	702	2.77	105%	1 @ 105%

- Balanced heifer bull with real breed character. Sire is proving himself as a female-making powerhouse. His first daughters have exceptional fleshing-ability, ideal teats and udder, and look to be real calf-raising machines.
- Dam is a beautiful long and angular female with a double shot of Emulation and good teats and udder. Grandam still in production with 3 @ 101% NR.

S&R-MS-HONCHO-169

Dam of Lot 27

S&R-MS-CORTEZ-974-182



Maternal Granddam of Lot 31



GA Mission N146

Reg: 21343103

DOB: 3/15/25

Tattoo: N146

COLEMAN CHARLO 0256
COLEMAN MISSION 1447
COLEMAN DONNA 439

O C C PAXTON 730P
BOHI ABIGALE 6014
GDAR GAME DAY 449
COLEMAN DONNA 714

S&R HONCHO 051
GA FANNY L822
S&R MS CORTEZ 974-182

DUFF HONCHO 426
S&R MS LONGEVITY 556Z-632
S&R CORTEZ 819C-974
S&R MS CHAPS 4095-835

Act. BW	Adj. 205 Wt	ADG	NR	Dam NR
79	697	2.69	102%	1 @ 102%

- Really complete bull out of a first calf heifer. We are impressed with the Mission daughters that are bred heifers - they look the part with extra depth of rib and femininity.
- Grandam and great grandam are exceptional with NR 3 @ 106% and 6 @ 96%.



GA Do It All N31

Reg: 21354534

DOB: 3/8/25

Tattoo: N31

O C C DO IT ALL 656D
REDLAND DO IT ALL 68
REDLAND LASS 570

O C C ZODIAC 655Z
O C C DIXIE ERICA 827A
GDAR GAME DAY 449
REDLAND LASS 616
COLEMAN CHARLO 0256
COLEMAN DONNA 714
RD RITO 465
RD PRIDE B275

COLEMAN BRAVO 6313
RD PRIDE L40
RD PRIDE J145

Act. BW	Adj. 205 Wt	ADG	NR	Dam NR
79	680	2.60	99%	1 @ 99%

- Heifer bull. Smooth-made 68 son with genomics ranking calving ease direct, birthweight, and dry matter intake in the top 15% of the breed.
- Dam is a feminine Bravo daughter with excellent teats and udder. Grandam and great grandam still in production with nursing ratios of 3 @ 101% and 10 @ 104%.



GA Genesis N457

Reg: 21326976

DOB: 4/1/25

Tattoo: N457

S C C GENESIS 847G
DUFF GENESIS 847G 22540
DUFF MERLE 190 460

DCC NEW LOOK 101
O C C JUANADA 927K
BAR WICK EUREKA 943 310
DUFF NE 319 MERLE 190

DUFF HONCHO 426
RD EILEEN J74
RD EILEEN G140

BAR WICK EUREKA 943 310
DUFF BI 619 LADYPOP 1017
O C C TREMENDOUS 619T
RD EILEEN E80

Act. BW	Adj. 205 Wt	ADG	NR	Dam NR
82	714	2.99	103%	3 @ 99%

- Stout Genesis bull that is moderate and wide-topped with excellent depth of rib. He is very docile, and his genomics rank meat tenderness in top 3% of the breed.
- Dam is a beautiful Honcho daughter that is one of the first ones to the cake bag. O C C Tremendous grandam still in production with nursing ratio 5 @ 97%.



Lot
33



Yearling Bulls

COLEMAN-RENOWN-0398

Maternal Grandsire to Lot 34

**GA Do It All N73**

Reg: 21354541

DOB: 3/11/25

Tattoo: N73

O C C DO IT ALL 656D
REDLAND DO IT ALL 68
 REDLAND LASS 570

COLEMAN RENOWN 0398
RD FOREVER LADY L239
 RD FOREVER LADY A153

O C C ZODIAC 655Z
 O C C DIXIE ERICA 827A
 GDAR GAME DAY 449
 REDLAND LASS 616
 S A V RENOWN 3439
 COLEMAN DONNA 7180
 OX BOW EXTRA 1337
 V D A R FOREVER LADY 0367

Act. BW	Adj. 205 Wt	ADG	NR	Dam NR
80	671	2.59	98%	1 @ 98%

- First-calf heifer produced this big scrotal, impressive Do It All 68 bull. Genomics rank dry matter intake, scrotal, and meat tenderness in top 10% of the breed.
- Coleman Renown 0398 produced some fantastic females for us that brought in some of the heaviest calves.

**GA External Law N758**

Reg: 21327061

DOB: 4/15/25

Tattoo: N758

BLAIR'S EXTERNAL LAW
RD EXTERNAL LAW L163
 MF/EBY EVER ENTENSE Y726

R44 EMULATION 0354
S&R MS EMULATION 0354-298
 S&R MS RAINDANCE 012

DUFF NAPOLEON 232
 BAR-E-L ERICA 74A
 O C C MISSING LINK 830M
 SHADYBROOK EVER ENTENSE 491G
 R44 EMULATION 7756
 R44 EISA EVERGREEN 354
 S A V RAINDANCE 6848
 S&R MS THUNDER 422

Act. BW	Adj. 205 Wt	ADG	NR	Dam NR
89	732	2.95	100%	2 @ 99%

- A power-packed, easy fleshing, beef producing External Law grandson. Genomics rank dry matter intake and ribeye area in top 10% of the breed.

**GA Do It All N143**

Reg: 21354544

DOB: 3/15/25

Tattoo: N143

O C C DO IT ALL 656D
REDLAND DO IT ALL 68
 REDLAND LASS 570

COLEMAN ACE 989
RD LUCY L93
 RD LUCY J438

O C C ZODIAC 655Z
 O C C DIXIE ERICA 827A
 GDAR GAME DAY 449
 REDLAND LASS 616
 COLEMAN BRAVO 6313
 COLEMAN DONNA 439
 FA OLD SCHOOL 4078
 RD LUCY F219

Act. BW	Adj. 205 Wt	ADG	NR	Dam NR
75	724	2.83	106%	1 @ 106%

- Do It All heifer bull that ranks in the top 10% of the breed for calving ease direct and birth weight.
- Dam is a fancy Ace first-calf heifer and grandam is one of our favorites with incredible depth of rib and productivity.

**GA Mission N19**

Reg: 21327017

DOB: 3/7/25

Tattoo: N19

COLEMAN CHARLO 0256
COLEMAN MISSION 1447
 COLEMAN DONNA 439

R44 EMULATION 0767
GA BESS L426
 R44 BESS 161

O C C PAXTON 730P
 BOHI ABIGALE 6014
 GDAR GAME DAY 449
 COLEMAN DONNA 714
 R44 EMULATION 7756
 R44 EISA EVERGREEN 767
 R44 EMULATION 7756
 R44 BESS 673

Act. BW	Adj. 205 Wt	ADG	NR	Dam NR
81	645	2.42	95%	1 @ 95%

- Calving ease Mission bull with adequate growth.
- Dam is a beautiful first calf heifer with a double shot of Emulation. Grandam production is 3 @ 100%.

**GA Do It All N129**

Reg: Not Reg

DOB: 3/14/25

Tattoo: N129

O C C DO IT ALL 656D
REDLAND DO IT ALL 68
 REDLAND LASS 570

ROCKING DOT COMMERCIAL
ROCKING DOT L588
 ROCKING DOT H722

O C C ZODIAC 655Z
 O C C DIXIE ERICA 827A
 GDAR GAME DAY 449
 REDLAND LASS 616

SINCLAIR X-PLUS 5XX34
 ROCKING DOT Y473

Act. BW	Adj. 205 Wt	ADG	NR	Dam NR
82	744	2.90	110%	1 @ 110%

- Super stout heifer bull. Genomics rank calving ease direct, birth weight, and scrotal in top 10% of the breed.
- First calf heifer really did a nice job with a weaning index of 109%. Grandam production 4 @ 102% and great grandam 10 @ 110%.

S&R-MS-4-REAL-265

Dam to Lot 39

**GA Glacier N434**

Reg: 21327038

DOB: 4/1/25

Tattoo: N434

COLEMAN GLACIER 041
RD GLACIER L149
 SAW BANKNOTE EMPRESS 702

DUFF-JC 4REAL 16250
S&R MS 4 REAL 265
 R44 PRIDE 450

S A V RENOWN 3439
 COLEMAN DONNA 439
 BROOKING BANK NOTE 4040
 SAW EMBLAZON 419 921 140
 DUFF NAPOLEON 232
 DUFF AMIGO 927K JUANADA 071
 MC CUMBER 4X13 EXTRA 077
 OX BOW PRIDE 5161

Act. BW	Adj. 205 Wt	ADG	NR	Dam NR
85	694	2.81	97%	2 @ 97%

- Balanced, power-packed Glacier bull that is tough to fault. Genomics rank weaning weight in the top 15% of the breed.
- Dam is a gentle, really nice young female that has a bright future.
- We flushed the 450 grandam this year. Ray was fortunate to acquire her from Bryan Pike several years ago. She is a deep-ribbed outstanding producer with production of 10 @ 107% and has near perfect teats, udder, and feet.





GA External Law N680

Reg: Not Reg

DOB: 4/12/25

Tattoo: N680

BLAIR'S EXTERNAL LAW
RD EXTERNAL LAW L99
SAW BANKNOTE EMPRESS 702

DUFF NAPOLEON 232
BAR-E-L ERICA 74A
BROOKING BANK NOTE 4040
SAW EMBLAZON 419 921 140

ROCKING DOT COMMERCIAL
ROCKING DOT G55
ROCKING DOT 574

ROCKING DOT COMMERCIAL
ROCKING DOT 541

Act. BW	Adj. 205 Wt	ADG	NR	Dam NR
84	722	3.11	102%	5 @ 103%

- Eye appeal, power, and soundness! Genomics rank dry matter intake and ribeye area in the top 10% of the breed.
- Dam's teats and udder are textbook perfect. Loads of longevity built in with grandam production 13 @ 105%.



GA Rito N7

Reg: 21326951

DOB: 3/6/25

Tattoo: N7

S A V RENOWN 3439
IDEAL 0026 RITO OF REN
IDEAL 7005 OF 0116 ERILOU

RITO 707 OF IDEAL 3407 7075
S A V BLACKCAP MAY 4136
COLEMAN EMBLAZON 0116
IDEAL 5724 OF 9524 ERILOU
COLEMAN BRAVO 6313
FAIRVIEW DONNA 2268
COLEMAN BRAVO 6313
S&R MS THUNDER 528

S&R BRAVO 6313- 111
GA BLACKBIRD L607
S&R MS BRAVO 6113- 102

Act. BW	Adj. 205 Wt	ADG	NR	Dam NR
83	687	2.61	99%	1 @ 99%

- Heifer bull with genomics ranking in top 15% of the breed for calving ease direct and birth weight.
- Grandam is an outstanding producer with 3 @ 115%. Stacking proven pedigrees takes out the guess work! These cattle are generations deep with strong maternal and backed by superior performance.



GA External Law N511

Reg: Not Reg

DOB: 4/4/25

Tattoo: N511

BLAIR'S EXTERNAL LAW
RD EXTERNAL LAW L163
MF/EBY EVER ENTENSE Y726

DUFF NAPOLEON 232
BAR-E-L ERICA 74A
O C C MISSING LINK 830M
SHADYBROOK EVER ENTENSE 491G
O C C YOU BET 800Y
RUDROW'S EMPRESS PRIDE 262
SINCLAIR IN TIME 3BA27
ROCKING DOT F497

RUDOW'S CAPITAL GAIN 50
ROCKING DOT K87
ROCKING DOT H41

Act. BW	Adj. 205 Wt	ADG	NR	Dam NR
80	707	2.88	108%	2 @ 106%

- Low input, high red meat yield in this soggy bull with a weaning index of 108%. He is moderate-framed and deep-bodied with excellent spring of rib. Genomics rank dry matter intake in the top 6% of the breed.
- Dam is a beautiful, forage-efficient Capital Gain daughter. The Capital Gain cows are fantastic with impeccable teats and udder. Maternal brother sold to Mauws Ranch in 2024.
- Grandam production 4 @ 98% and great grandam still in production with 6 @ 101%.



GA Do It All N22

Reg: 21365376

DOB: 3/7/25

Tattoo: N22

O C C DO IT ALL 656D
REDLAND DO IT ALL 68
REDLAND LASS 570

O C C ZODIAC 655Z
O C C DIXIE ERICA 827A
GDAR GAME DAY 449
REDLAND LASS 616

COLEMAN RENOWN 0398
GA EISA EVERGREEN L504
R44 EISA EVERGREEN 058

S A V RENOWN 3439
COLEMAN DONNA 7180
O C C PAXTON 730P
OX BOW EISA EVERGREEN 290

Act. BW	Adj. 205 Wt	ADG	NR	Dam NR
68	657	2.54	97%	1 @ 97%

- Twin out of a first calf heifer. This bull ranks in top 25% of the breed for ribeye area and meat tenderness.
- Stacking good, proven, forage efficient cattle in this pedigree with Do It All, Game Day, Renown, and Paxton.



GA Emulation N672

Reg: 21328422

DOB: 4/11/25

Tattoo: N672

R44 EMULATION 7756
R44 EMULATION 0354
R44 EISA EVERGREEN 354

SINCLAIR EMULATION XXP
OX BOW BLACKCAP 756
GDAR GAME DAY 449
SITZ RLS EISA EVERGREEN 715R

SCHIEFELBEIN EFFECTIVE 61
S&R MS EFFECTIVE 61-603
S&R MS CHISUM 228-443

CAR EFFICIENT 534
FROSTY ANSWER 3979
S&R CHISUM 228
S&R MS EMBLAZON 656

Act. BW	Adj. 205 Wt	ADG	NR	Dam NR
84	726	3.13	102%	8 @ 97%

- Smooth made Emulation bull. Genomics rank him in top 10% of the breed for heifer pregnancy.
- Sire 0354 from Bryan Pike's program is proving himself as a female-making machine. His first daughters have exceptional fleshing-ability and ideal teats and udder.

S&R MS THUNDER-528



Maternal Grandam of Lot 45



GA Renown N13

Reg: 21354584

DOB: 3/7/25

Tattoo: N13

COLEMAN RENOWN 0398
RD RENOWN L952
S&R MS HONCHO 013

S A V RENOWN 3439
COLEMAN DONNA 7180
DUFF HONCHO 426
S&R MS CHAPS 4095-895
O C C DO IT ALL 656D
REDLAND BEEBE QUEENMERE 3114
CONNEALY THUNDER
S&R MS CAPITALIST 028-351

REDLAND TRENDSETTER 1869
GA BLACKBIRD L68
S&R MS THUNDER 528

Act. BW	Adj. 205 Wt	ADG	NR	Dam NR
82	683	2.60	99%	1 @ 99%

- Heifer bull that should really produce the type and kind to get it done in any range environment, stacking the likes of Renown, Honcho, Trendsetter, and the 528 cow. Genomics rank him in top 10% of breed for meat tenderness.
- Dam is a gentle first calf heifer with excellent teats, udder, and milk. Really no surprises here with the 528 matriarch as the grandam.





COLEMAN-CHARLO-9430



Maternal Grandsire of Lot 49

46

GA Mission N736

Reg: 21354548 DOB: 4/15/25 Tattoo: N736

COLEMAN CHARLO 0256
COLEMAN MISSION 1447
COLEMAN DONNA 439

O C C TREMENDOUS 619T
RD DIXIE H86
RD DIXIE F167

O C C PAXTON 730P
BOHI ABIGALE 6014
GDAR GAME DAY 449
COLEMAN DONNA 714
O C C EMBLAZON 854E
O C C DIXIE ERICA 960H
SINCLAIR SUN DIAL 5TL15
RD DIXIE B11

Act. BW	Adj. 205 Wt	ADG	NR	Dam NR
78	727	3.17	103%	4 @ 100%

- Stylish Mission son with performance and eye appeal. Top scores in genomics for dry matter intake and meat tenderness.
- O C C Tremendous 619T-bred dam is a moderate frame cow with the attractive, productive Angus female profile that we strive to produce. Grandam is a calf-raising machine with production 6 @ 108%.

47

GA Do It All N163

Reg: Not Reg DOB: 3/17/25 Tattoo: N163

O C C DO IT ALL 656D
REDLAND DO IT ALL 68
REDLAND LASS 570

R44 EMULATION 0354
ROCKING DOT L906
ROCKING DOT 632

O C C ZODIAC 655Z
O C C DIXIE ERICA 827A
GDAR GAME DAY 449
REDLAND LASS 616
R44 EMULATION 756
R44 EISA EVERGREEN 354

Act. BW	Adj. 205 Wt	ADG	NR	Dam NR
85	695	2.64	100%	1 @ 100%

- Another attractive Redland Do it All 68 son. These 68 calves are big bodied and robust and look like they are going to really work well in our program. Hands down, the calves off the 2-year-olds this year were the best set we have ever raised. Genomics rank this bull in top 20% of breed for dry matter intake.

48

GA Emulate N752

Reg: 21327060 DOB: 4/15/25 Tattoo: N752

MC CUMBER 307 FORTUNATE 7141
CHAPMAN EMULATE 1800J
CHAPMAN ELINE ERICA 8365F

DUFF CARRIED AWAY 1882
S&R MS CARRIED AWAY 1882-224
S&R MS FINAL ANSWER 211

MC CUMBER FORTUNATE 307
B PRIDE 2143 OF MC CUMBER
BC ROBUST 0807
CROWFOOT ELINE ERICA 3132A
DUFF CARRY ON 252
DUFF FL 443 MERLE 867
S A V FINAL ANSWER 0035
S&R MS PAXTON 706-945

Act. BW	Adj. 205 Wt	ADG	NR	Dam NR
85	782	3.22	109%	2 @ 100%

- Deep-bodied, docile, high indexing young bull out of 3-year-old cow. Proven pedigree with McCumber Fortunate/BC Robust/Carried Away/Final Answer. Genomics rank him in the top 15% of the breed for dry matter intake.
- Grandam was an outstanding producer that Ray flushed.

49

GA Trendsetter N686

Reg: 21326999 DOB: 4/12/25 Tattoo: N686

REDLAND TRENDSETTER 1869
RD TRENDSETTER L84
S&R MS THUNDER 528

COLEMAN CHARLO 9430
RD DUTCHESS K834
RD DUTCHESS E480

O C C DO IT ALL 656D
REDLAND BEEBE QUEENMERE 3114
CONNEALY THUNDER
S&R MS CAPITALIST 028-351
COLEMAN CHARLO 0256
COLEMAN DONNA 7231
FAIRVIEW RITO 7075 4104
RD DUTCHESS Z185

Act. BW	Adj. 205 Wt	ADG	NR	Dam NR
86	739	3.04	115%	2 @ 111%

- Strong performance bull with 115% nursing ratio! Top 15% of the breed for scrotal. This kind are hard to find in our industry - the kind that will leave scale smashing steer calves and females that are productive, low maintenance, and will make you profitable for the long run.
- Dam is a productive young Charlo-bred cow with 2 @ 111%! Grandam and great grandam still in production with 7 @ 96% and 13 @ 95%.

50

GA Bravo N502

Reg: Not Reg DOB: 4/3/25 Tattoo: N502

COLEMAN BRAVO 6313
S&R BRAVO 6113-121
FAIRVIEW DONNA 2268

O C C TREMENDOUS 619T
ROCKING DOT L19
ROCKING DOT J2

COLEMAN CHARLO 0256
COLEMAN DONNA 714
LEACHMAN RIGHT TIME
DONNA OF THISTLEDEW 757
O C C EMBLAZON 854E
O C C DIXIE ERICA 960H
INGRAM CHARCOAL 7001
ROCKING DOT 6579

Act. BW	Adj. 205 Wt	ADG	NR	Dam NR
85	705	2.69	102%	1 @ 102%

- Balanced and docile Bravo/Tremendous bull calf. Ranks in top 15% of the breed for dry matter intake and meat tenderness.
- Young 2-year old dam has excellent teats and udder and is off to a great start. Grandam production 3 @ 102% and great grandam 5 @ 104%.

51

GA Do It All N45

Reg: Not Reg DOB: 3/9/25 Tattoo: N45

O C C DO IT ALL 656D
REDLAND DO IT ALL 68
REDLAND LASS 570

RD CARRIED AWAY J93
ROCKING DOT L546
ROCKING DOT H41

O C C ZODIAC 655Z
O C C DIXIE ERICA 827A
GDAR GAME DAY 449
REDLAND LASS 616
DUFF CARRIED AWAY 1882
COLEMAN JUANADA 6441
SINCLAIR IN TIME 3BA27
ROCKING DOT F497

Act. BW	Adj. 205 Wt	ADG	NR	Dam NR
78	693	2.67	102%	1 @ 102%

- Ideal structure from the ground up. This outstanding 68 son is balanced and deep-ribbed.
- Genomics rank this bull's dry matter intake, scrotal, and meat tenderness in top 10% of the breed.
- Dam is feminine with exceptional teats, udder, and feet. Grandam production 4 @ 98% and great grandam 6 @ 101%.



RD-HONCHO-J66

Sire of Lots 17, 18, 20, 52, 65, 72, and 85

HEIFER BULL

52**GA Honcho N480**

Reg: 21326980

DOB: 4/3/25

Tattoo: N480

DUFF HONCHO 426
RD HONCHO J66
 RD DONNA G337

OX BOW REVIVAL 3226
RD WENDY C151
 GA WENDY W229

BAR WICK EUREKA 943 310
 DUFF BI 619 LADYPOP 1017
 REDLAND RANGER 164
 DONNA OF THISTLEDEW 1EN1
 OX BOW REVIVAL 1313
 OX BOW EOLA 1137
 BASIN PAYWEIGHT 342R
 GA WENDY YELLOWSTONE 1515

Act. BW	Adj. 205 Wt	ADG	NR	Dam NR
80	665	2.85	96%	9 @ 98%

- J66 can sure stamp them! Heifer bull with depth, balance and real world forage efficiency. Genomics rank him in top 20% of breed for calving ease direct, birth weight, and dry matter intake.
- Grandam highly productive with 12 @ 108% nursing ratio.

53**GA Genesis N551**

Reg: 21327044

DOB: 4/5/25

Tattoo: N551

S C C GENESIS 847G
DUFF GENESIS 847G 22540
 DUFF MERLE 190 460

DUFF CARRIED AWAY 1882
S&R MS CARRIED AWAY 1882-221
 S&R MS PAXTON 837-3116

DCC NEW LOOK 101
 O C C JUANADA 927K
 BAR WICK EUREKA 943 310
 DUFF NE 319 MERLE 190
 DUFF CARRY ON 252
 DUFF FL 443 MERLE 867
 S&R OCC PAXTON 837
 S&R MS RETAIL PRODUCT 643

Act. BW	Adj. 205 Wt	ADG	NR	Dam NR
81	775	3.19	108%	2 @ 102%

- Duff Genesis son that is super balanced and complete. Should work on larger framed heifers with calving ease direct in top 15% of the breed. Genomics rank dry matter intake in top 7% of the breed.
- Carried Away dam has excellent teats and udder. Ray flushed grandam 3116, who is still in production with 11 @ 106%. She is a deep-bodied Paxton cow with very good teats, udder, and feet.

54**GA Do It All N72**

Reg: Not Reg

DOB: 3/11/25

Tattoo: N72

O C C DO IT ALL 656D
REDLAND DO IT ALL 68
 REDLAND LASS 570

S&R CORTEZ 819C-974
GA DANCER L681
 S&R MS CONNEALY THUNDER 418

O C C ZODIAC 655Z
 O C C DIXIE ERICA 827A
 GDAR GAME DAY 449
 REDLAND LASS 616
 O C C CORTEZ 819C
 S&R MS CHISUM 237-629
 CONNEALY THUNDER
 S&R MS PAXTON 941

Act. BW	Adj. 205 Wt	ADG	NR	Dam NR
73	700	2.73	103%	1 @ 103%

- Heifer bull deluxe! His calving ease direct and birth weight rank in the top 10% of the breed, so he should be a sure shot heifer bull.
- L681 dam is a highly maternal Cortez X Thunder female with excellent teats and udder.

55

Reg: Not Reg

GA Rito N101

DOB: 3/13/25

Tattoo: N101

S A V RENOWN 3439
IDEAL 0026 RITO OF REN
 IDEAL 7005 OF 0116 ERILOU

RITO 707 OF IDEAL 3407 7075
 S A V BLACKCAP MAY 4136
 COLEMAN EMBLAZON 0116
 IDEAL 5724 OF 9524 ERILOU

ROCKING DOT COMMERCIAL
ROCKING DOT L900
 ROCKING DOT 702

Act. BW	Adj. 205 Wt	ADG	NR	Dam NR
78	681	2.61	99%	1 @ 99%

- Ideal 0026 Rito of REN son with dry matter intake in the top 15% of the breed. 0026 is owned by Shipwheel Cattle Co and has really worked well in our program. His daughters are outstanding brood cows with excellent teats, udder, and feet.
- Excellent calving marks on the dam's maternal and teats and udder.

56**GA External Law N614**

Reg: 21326993

DOB: 4/9/25

Tattoo: N614

BLAIR'S EXTERNAL LAW
RD EXTERNAL LAW L99
 SAW BANKNOTE EMPRESS 702

COLEMAN CHARLO 7177
RD DUTCHESS J88
 RD DUTCHESS Z185

DUFF NAPOLEON 232
 BAR-E-L ERICA 74A
 BROOKING BANK NOTE 4040
 SAW EMBLAZON 419 921 140
 COLEMAN CHARLO 0256
 COLEMAN DONNA 197
 GA DATELINE CHAIRMAN 278R
 GA DUTCHESS EMULATION S656

Act. BW	Adj. 205 Wt	ADG	NR	Dam NR
79	681	2.86	96%	3 @ 98%

- Calving ease bull that is masculine and early maturing.
- Longevity built in with grandam production 13 @ 95%. Maternal brother sold to Blair Nack in 2024 sale.

57**GA Do It All N63**

Reg: 21354539

DOB: 3/11/25

Tattoo: N63

O C C DO IT ALL 656D
REDLAND DO IT ALL 68
 REDLAND LASS 570

S A V ANTHEM 0042
RD CHLOE L129
 RD CHLOE E90

O C C ZODIAC 655Z
 O C C DIXIE ERICA 827A
 GDAR GAME DAY 449
 REDLAND LASS 616
 S A V AMERICA 8018
 S A V MADAME PRIDE 3145
 SINCLAIR CCR 2D53
 BASIN CHLOE 3426

Act. BW	Adj. 205 Wt	ADG	NR	Dam NR
77	732	2.86	108%	1 @ 108%

- No hesitation in this pedigree - a real opportunity here to buy a group of half brothers, sired by Redland Do It All 68. They have all the main requirements we want to build upon. Just like his sire, this guy will add muscle, length of body, and massive rib shape.
- Young Anthem dam has excellent maternal and perfect teats and udder. Grandam still in production with 7 @ 102% nursing ratio.



Miles and Leo



Yearling Bulls

REDLAND-DO-IT-ALL-140



Sire of Lot 58



GA Do It All N710

Reg: Not Reg

DOB: 4/13/25

Tattoo: N710

O C C DO IT ALL 656D
REDLAND DO IT ALL 140
REDLAND 524

O C C ZODIAC 655Z
O C C DIXIE ERICA 827A
COLE CREEK CEDAR RIDGE 1V

RD FORTUNATE E108
ROCKING DOT H624
ROCKING DOT B196

SINCLAIR CCR 2D53
RD ANNA Y383
ROCKING DOT COMMERCIAL
ROCKING DOT 503

Act. BW	Adj. 205 Wt	ADG	NR	Dam NR
85	729	3.14	101%	4 @ 97%

- A complete bull that will sire range efficient females and growthy steer calves.
- Grandsire O C C Do It All has had a significant impact at Redland Angus in Wyoming. We purchased sire 140 as our pick from their sale in 2022. He has impressed us with his phenotype - masculine and long-bodied - and his virility.



GA Renown N32

Reg: 21354535

DOB: 3/8/25

Tattoo: N32

S A V RENOWN 3439
IDEAL 0026 RITO OF REN
IDEAL 7005 OF 0116 ERILOU

DUFF HONCHO 426
RD EILEEN L188
RD EILEEN E79

RITO 707 OF IDEAL 3407 7075
S A V BLACKCAP MAY 4136
COLEMAN EMBLAZON 0116
IDEAL 5724 OF 9524 ERILOU
BAR WICK EUREKA 943 310
DUFF BI 619 LADYPOP 1017
SINCLAIR TIMELESS 8BA4
RD EILEEN C191

Act. BW	Adj. 205 Wt	ADG	NR	Dam NR
79	711	2.75	104%	1 @ 104%

- Calving ease bull with good growth.
- Dam is a beautiful first calf heifer tracing back to Honcho. Grandam is a favorite on the ranch with a production record 7 @ 111%.



GA Do It All N3

Reg: Not Reg

DOB: 3/4/25

Tattoo: N3

O C C DO IT ALL 656D
REDLAND DO IT ALL 68
REDLAND LASS 570

COLEMAN ACE 989
ROCKING DOT L10
ROCKING DOT J336

O C C ZODIAC 655Z
O C C DIXIE ERICA 827A
GDAR GAME DAY 449
REDLAND LASS 616
COLEMAN BRAVO 6313
COLEMAN DONNA 439
ROCKING DOT E352
ROCKING DOT D639

Act. BW	Adj. 205 Wt	ADG	NR	Dam NR
76	702	2.72	103%	1 @ 103%

- Should work on larger framed heifers.
- Coleman Ace dam was a really good mother with excellent teats and udder.



GA Emulation N331

Reg: 21327028

DOB: 3/28/25

Tattoo: N331

R44 EMULATION 7756
R44 EMULATION 0354
R44 EISA EVERGREEN 354

S&R CHISUM 237
S&R MS CHISUM 237-668
S&R MS PREDESTINED 834

SINCLAIR EMULATION XXP
OX BOW BLACKCAP 756
GDAR GAME DAY 449
SITZ RLS EISA EVERGREEN 715R
S CHISUM 6175
S&R MS RETAIL PRODUCT
G A R PREDESTINED
S&R MS EMBLAZON 413

Act. BW	Adj. 205 Wt	ADG	NR	Dam NR
93	773	3.20	104%	8 @ 101%

- Solid Emulation-bred bull with good performance. Dry matter intake ranked in top 8% of the breed on genomics test.
- Dam is a consistent producer with nursing ratio 8 @ 101%.

HEIFER BULL

Lot
58

Yearling Bulls



RD-ERICA-A74



Paternal Grandam of Lot 64



GA Resource N243

Reg: 21326957 DOB: 3/24/25 Tattoo: N243

COLEMAN RESOURCE 708
RD RESOURCE L282
RD CHLOE F473

COLEMAN BRAVO 6313
RD BLACKBIRD H214
BLACKBIRD OF THISTLEDEW 6M12

S A V RESOURCE 1441
COLEMAN DONNA 376
SINCLAIR SUN DIAL 5TL15
RD CHLOE A310
COLEMAN CHARLO 0256
COLEMAN DONNA 714
MASSIVE OF THISTLEDEW 9M1
BLACKBIRD OF THISTLEDEW 2BX3

Act. BW	Adj. 205 Wt	ADG	NR	Dam NR
76	656	2.83	96%	4 @ 97%

- Nice, balanced calving ease bull suitable for use on heifers. Genomics rank foot, udder, and meat tenderness scores in the top 10% of the breed.
- Dam is a lovely Bravo daughter with ideal teats and udder. We have sold several top selling herd bulls out of the grandam D12, production record 8 @ 96%.



GA External Law N727

Reg: 21327055 DOB: 4/14/25 Tattoo: N727

BLAIR'S EXTERNAL LAW
RD EXTERNAL LAW L276
RD ERICA A74

DUFF HONCHO 426
G&L MS DONNA HONCHO 016
FAIRVIEW DONNA 2268

DUFF NAPOLEON 232
BAR-E-L ERICA 74A
SINCLAIR TIME UP 9P2
RD SHADY LADY Y519
BAR WICK EUREKA 943 310
DUFF BI 619 LADYPOP 1017
LEACHMAN RIGHT TIME
DONNA OF THISTLEDEW 757

Act. BW	Adj. 205 Wt	ADG	NR	Dam NR
82	715	3.09	101%	4 @ 100%

- Forage efficient bull that will produce a whale of a set of steer calves and females that are profitable and functional for the long run.
- Dam is an eye catching Honcho daughter out of the elite FairView Donna 2268 daughter, who was a sale feature at the FairView dispersion.

S&R-MS-HONCHO-017



Dam of Lot 63



GA Honcho N616

Reg: 21326994 DOB: 4/9/25 Tattoo: N616

DUFF HONCHO 426
RD HONCHO J66
RD DONNA G337

SINCLAIR X-PLUS 5XX34
GA LASS F7
GA PAYWEIGHT LASS U252

BAR WICK EUREKA 943 310
DUFF BI 619 LADYPOP 1017
REDLAND RANGER 164
DONNA OF THISTLEDEW 1EN1
SINCLAIR EMULATION XXP
MISS WIX 2022 HC MC CUMBER
BASIN PAYWEIGHT 342R
G A TRAVELERS LASS 1705

Act. BW	Adj. 205 Wt	ADG	NR	Dam NR
75	684	2.97	99%	6 @ 97%

- Easy going J66 son with genomics that rank him in the top 10% of the breed for docility.
- Dam is a highly docile 5XX34 daughter.



GA External Law N452

Reg: 21327039 DOB: 4/2/25 Tattoo: N452

BLAIR'S EXTERNAL LAW
RD EXTERNAL LAW L99
SAW BANKNOTE EMPRESS 702

DUFF HONCHO 426
S&R MS HONCHO 017
S&R MS CORTEZ 819C-810

DUFF NAPOLEON 232
BAR-E-L ERICA 74A
BROOKING BANK NOTE 4040
SAW EMBLAZON 419 921 140
BAR WICK EUREKA 943 310
DUFF BI 619 LADYPOP 1017
O C C CORTEZ 819C
S&R MS WIND BREAK 7062-615

Act. BW	Adj. 205 Wt	ADG	NR	Dam NR
80	753	3.28	107%	4 @ 103%

- Top calving ease bull with a nursing ratio of 107%.
- Dam is a beautiful Honcho daughter off to a terrific start. Grandam outstanding with production 6 @ 106 nursing ratio.



GA Genesis N297

Reg: 21327025 DOB: 3/26/25 Tattoo: N297

S C C GENESIS 847G
DUFF GENESIS 847G 22540
DUFF MERLE 190 460

DUFF PURE BEEF 217 19127
S&R MS PURE BEEF 19127-264
S&R MS STUR-D 522

DCC NEW LOOK 101
O C C JUANADA 927K
BAR WICK EUREKA 943 310
DUFF NE 319 MERLE 190

DUFF PURE BEEF 217
DUFF EB 841M DIXIEERICA 1120
HARB STUR-D 191 JH
S&R MS INDUSTRY 109

Act. BW	Adj. 205 Wt	ADG	NR	Dam NR
81	736	3.20	108%	2 @ 102%

- Top performing Genesis bull that indexed 108%.
- Attractive young dam is docile and productive. Grandam 522 is a real gem with production 9 @ 106%. She is on our list to be flushed.



GA External Law N431

Reg: 21326973

DOB: 4/1/25

Tattoo: N431

BLAIR'S EXTERNAL LAW
RD EXTERNAL LAW L99
SAW BANKNOTE EMPRESS 702

SINCLAIR TIME KEEPER 3BA27
RD CHLOE H20
RD CHLOE F210

DUFF NAPOLEON 232
BAR-E-L ERICA 74A
BROOKING BANK NOTE 4040
SAW EMBLAZON 419 921 140
SINCLAIR IN TIME 6BT39
SINCLAIR PRIMROSE 1P12 D011
OX BOW EMULATION 5309
RD CHLOE B47

Act. BW	Adj. 205 Wt	ADG	NR	Dam NR
87	711	3.05	100%	4 @ 102%

- Smooth made External Law bull. Genomics rank him in the top 3% of the breed for dry matter intake, top 3% for heifer pregnancy, and top 14% for meat tenderness.
- Grandam and great grandam (10 @ 100% nursing ratio) are still in production.

S&R-MS-CORTEZ-819C-903



Dam of Lot 68



GA 4Real N646

Reg: 21327053

DOB: 4/11/25

Tattoo: N646

DUFF-JC 4REAL 16250
S&R 4 REAL 202
S&R MS FINAL ANSWER 211

O C C CORTEZ 819C
S&R MS CORTEZ 819C-903
S&R MS STUR-D 511-7124

DUFF NAPOLEON 232
DUFF AMIGO 927K JUANADA 071
S A V FINAL ANSWER 0035
S&R MS PAXTON 706-945
O C C BIG TIME 746Z
O C C DIXIE ERICA 680W
S&R STUR-D 511
S&R MS PAXTON 978-706

Act. BW	Adj. 205 Wt	ADG	NR	Dam NR
85	743	3.21	105%	5 @ 105%

- Smooth made, deep bodied 4Real bull.
- Maternal brother was a sale feature in our 2024 sale going to Nash Land and Livestock. Cortez dam is ultra feminine and wedge-shaped with good teats and udder.



GA External Law N446

Reg: 21326974

DOB: 4/2/25

Tattoo: N446

BLAIR'S EXTERNAL LAW
RD EXTERNAL LAW L99
SAW BANKNOTE EMPRESS 702

OX BOW FINAL ANSWER 1304
GA WENDY D117
GA EMULATION WENDY X131

DUFF NAPOLEON 232
BAR-E-L ERICA 74A
BROOKING BANK NOTE 4040
SAW EMBLAZON 419 921 140
S A V FINAL ANSWER 0035
OX BOW FOREVER LADY 966
GA EMULATION TRAVELER 265
G A TRENDY EOLA 1515

Act. BW	Adj. 205 Wt	ADG	NR	Dam NR
85	705	3.03	100%	8 @ 104%

- Stout External Law L99 son that Genomics rank in top 7% of breed for scrotal and top 16% for meat tenderness.
- Dam is a gentle 1304 daughter with excellent production, posting 8 @ 104% nursing ratio.

S&R-MS-PAXTON-837-3116



Dam of Lot 70



GA Rock N626

Reg: 21327049

DOB: 4/10/25

Tattoo: N626

COLEMAN ROCK 7200
RD ROCK L322
RD PAISLEY C315

S&R OCC PAXTON 837
S&R MS PAXTON 837-3116
S&R MS RETAIL PRODUCT 643

O C C JUNEAU 807J
COLEMAN DONNA 714
SINCLAIR CCR 2D53
BASIN CHLOE 3426
O C C PAXTON 730P
S&R MS FOCUS L908
G A R RETAIL PRODUCT
G A R 505 2RT2 772

Act. BW	Adj. 205 Wt	ADG	NR	Dam NR
90	790	3.31	108%	11 @ 106%

- Solid performance bull with a 790 pound 205-day weight out of a 12 year-old cow. This kind are hard to find in our industry - the kind that will leave scale smashing steer calves and females that are productive, low maintenance, and will make you profitable for the long run. Genomics ranked this bull in the top 10% of the breed for heifer pregnancy.
- Ray flushed dam 3116, who is still in production with 11 @ 106%. She is a deep-bodied Paxton cow with very good teats, udder, and feet.



GA 4Real N532

Reg: 21327042

DOB: 4/5/25

Tattoo: N532

DUFF-JC 4REAL 16250
S&R 4 REAL 202
S&R MS FINAL ANSWER 211

S&R CHISUM 237
S&R MS CHISUM 237-5108
S&R MS PREDOMINANT 208

DUFF NAPOLEON 232
DUFF AMIGO 927K JUANADA 071
S A V FINAL ANSWER 0035
S&R MS PAXTON 706-945
S CHISUM 6175
S&R MS RETAIL PRODUCT
S A V 004 PREDOMINANT 4438
S&R MS PREDESTINED 711

Act. BW	Adj. 205 Wt	ADG	NR	Dam NR
85	736	3.07	101%	9 @ 105%

- Low input, high red meat yield in this stout bull. He is moderate-framed and deep-bodied with excellent spring of rib. Genomics rank dry matter intake in top 8% of the breed, scrotal top 4%, and foot claw & angle top 10%.
- His sire is the massive-bodied 202 herd bull.
- Chisum dam has been highly productive with production 9 @ 105% nursing ratio!



RD-LASS-G521

Dam of Lot 72

**GA Honcho N535**

Reg: 21326982

DOB: 4/5/25

Tattoo: N535

DUFF HONCHO 426
RD HONCHO J66
 RD DONNA G337

SINCLAIR TIME KEEPER 3BA27
RD LASS G521
 RD LASS E189

BAR WICK EUREKA 943 310
 DUFF BI 619 LADYPOP 1017
 REDLAND RANGER 164
 DONNA OF THISTLEDEW 1EN1
 SINCLAIR IN TIME 6BT39
 SINCLAIR PRIMROSE 1P12 D011
 SINCLAIR CCR 2D53
 RD GIGANTIC LASS Z456

Act. BW	Adj. 205 Wt	ADG	NR	Dam NR
95	695	2.93	98%	5 @ 100%

- Impressive body shape and hip on this moderate J66 son.
- Dam is a beautiful Sinclair Time Keeper daughter and grandam is a powerhouse with production 7 @ 100%.

**GA 4Real N837**

Reg: 21404946

DOB: 4/19/25

Tattoo: N837

DUFF-JC 4REAL 16250
S&R 4 REAL 202
 S&R MS FINAL ANSWER 211

O C C CORTEZ 819C
S & R MS CORTEZ 040
 S&R MS STUR-D 522

DUFF NAPOLEON 232
 DUFF AMIGO 927K JUANADA 071
 S A V FINAL ANSWER 0035
 S&R MS PAXTON 706-945
 O C C BIG TIME 746Z
 O C C DIXIE ERICA 680W
 HARB STUR-D 191 JH
 S&R MS INDUSTRY 109

Act. BW	Adj. 205 Wt	ADG	NR	Dam NR
87	763	3.30	108%	4 @ 100%

- Incredible muscle and growth in this stout, rugged herd bull.
- Genomics rank his ribeye area and tenderness exceptionally high.
- Cortez dam has a beautiful tidy udder and grandam is a real gem with production 9 @ 106%. She is on our list to be flushed.

**GA Emulation N608**

Reg: 21326991

DOB: 4/8/25

Tattoo: N608

R44 EMULATION 7756
R44 EMULATION 0354
 R44 EISA EVERGREEN 354

COLEMAN RESOURCE 708
RD KARAMA H171
 RD KARAMA C393

SINCLAIR EMULATION XXP
 OX BOW BLACKCAP 756
 GDAR GAME DAY 449
 SITZ RLS EISA EVERGREEN 715R
 S A V RESOURCE 1441
 COLEMAN DONNA 376
 OX BOW EXTRA 1337
 RD KARAMA Y71

Act. BW	Adj. 205 Wt	ADG	NR	Dam NR
91	727	3.07	100%	4 @ 100%

- A great Emulation-bred bull with added length of spine and muscle. He ranks in the top 1% of the entire breed for dry matter intake and the top 9% for meat tenderness.
- Dam is a highly attractive 708 daughter with the typical perfect teat, udder, and feet. Grandam is a cow we flushed with production 9 @ 108%!

S&R-MS-BRAVO-6313-108

Dam of Lot 75

**GA Genesis N283**

Reg: 21327023

DOB: 3/26/25

Tattoo: N283

S C C GENESIS 847G
DUFF GENESIS 847G 22540
 DUFF MERLE 190 460

COLEMAN BRAVO 6313
S&R MS BRAVO 6313-108
 S&R MS THUNDER 528

DCC NEW LOOK 101
 O C C JUANADA 927K
 BAR WICK EUREKA 943 310
 DUFF NE 319 MERLE 190
 COLEMAN CHARLO 0256
 COLEMAN DONNA 714
 CONNEALY THUNDER
 S&R MS CAPITALIST 028-351

Act. BW	Adj. 205 Wt	ADG	NR	Dam NR
75	729	3.12	102%	3 @ 108%

- Ideal structure from the ground up on this good calving ease Genesis bull. Genomics rank his scrotal size, foot claw and angle, and meat tenderness in top 15% of the breed.
- Dam is a top producing 528 daughter and full sister to the dam of Lot 21 - really no surprises here with the 528 matriarch and Coleman Bravo in her pedigree.

RD-LASS-G77

Dam of Lot 76

**GA External Law N577**

Reg: 21326987

DOB: 4/7/25

Tattoo: N577

BLAIR'S EXTERNAL LAW
RD EXTERNAL LAW L99
 SAW BANKNOTE EMPRESS 702

COLEMAN RESOURCE 708
RD LASS G77
 RD LASS C350

DUFF NAPOLEON 232
 BAR-E-L ERICA 74A
 BROOKING BANK NOTE 4040
 SAW EMBLAZON 419 921 140
 S A V RESOURCE 1441
 COLEMAN DONNA 376
 SINCLAIR CCR 2D53
 RD GIGANTIC LASS Z456

Act. BW	Adj. 205 Wt	ADG	NR	Dam NR
96	719	2.99	99%	5 @ 98%

- Check out this power-packed stud! You will find an abundance of body capacity.
- Genomics rank dry matter intake in top 3%, ribeye area top 15%, and meat tenderness top 17% of the breed.
- G77 is an outstanding 708 daughter. Grandam still in production with 9 @ 104% nursing ratio.

77

HEIFER BULL

GA Rock N631

Reg: 21327051 DOB: 4/10/25 Tattoo: N631

COLEMAN ROCK 7200
RD ROCK L322
RD PAISLEY C315

O C C CORTEZ 819C
S&R MS CORTEZ 819C-918
S&R MS LONGEVITY 556Z-717

O C C JUNEAU 807J
COLEMAN DONNA 714
SINCLAIR CCR 2D53
BASIN CHLOE 3426

O C C BIG TIME 746Z
O C C DIXIE ERICA 680W
SITZ LONGEVITY 556Z
S&R MS CHISUM 6175-366

Act. BW	Adj. 205 Wt	ADG	NR	Dam NR
80	789	3.46	113%	5 @ 100%

Reference Sire

- POWER bull that indexed 113%. Suitable for use on heifers with genomics ranking him in the top 20% of breed for calving ease direct and birth weight.
- Are you looking to produce some scale-smashing steer calves? You can bank on this L322 son to do just that.
- Dam is an attractive wedge-shaped cow characteristic of the Cortez daughters.



Sire of Lot 79

79

HEIFER BULL

GA Hi-Country N661

Reg: 21344243 DOB: 4/12/25 Tattoo: N661

ELLINGSON HI-RANGE
HF HI-COUNTRY 7L
HF TIBBIE 21J

COLEMAN CHARLO 0256
COLEMAN JUANADA 8496
COLEMAN JUANADA 6441

ELLINGSON RANGELAND
EA EMBLYNETTE 9473
SCHIEFELBEIN SHOWMAN 338
HF TIBBIE 215B

O C C PAXTON 730P
BOHI ABIGALE 6014
COLEMAN KNIGHT 209
COLEMAN JUANADA 1509

Act. BW	Adj. 205 Wt	ADG	NR	Dam NR
91	825	3.58	115%	ET

Reference Sire

- Sheer power in this top performing HF Hi-Country son who indexed at 115% nursing ratio. Hi-Country was the top selling, \$185,000 sire sold by Hamilton Farms in 2024. This embryo calf is the highest performing of the entire flush and will be the only one we offer for sale at this time.
- Genomics rank him in the top 13% of the breed for weaning weight, top 1% for scrotal, top 10% for foot claw and angle, and top 10% for ribeye area.
- Dam is a tremendous Charlo daughter, who we sold to Pine Coulee in 2023. Her heifer calf was chosen as pick of the heifer calves in 2023 as well.

78

HEIFER BULL

GA Robust N202

Reg: 21406162 DOB: 3/22/25 Tattoo: N202

BC ROBUST 0807
DUFF ROBUST 0807 22522
DUFF MIRANDA 1074 18515

G&L CONCHO 008
GA DANCER 289
S&R MS THUNDER 545

BC SURVEYOR 680D
BC 327-8 CP BELLE 0-807
DUFF HONCHO 426
DUFF MISS MIRANDA 9141 1074

DUFF HONCHO 426
FAIRVIEW DONNA 2268
CONNEALY THUNDER
S&R MS WINDY 078-335

Act. BW	Adj. 205 Wt	ADG	NR	Dam NR
83	714	2.90	99%	2 @ 101%

Reference Sire

- Suitable for larger framed heifers. This is a deep-sided and balanced beef bull sired by our young herd sire Duff Robust 0807 22522. We are really excited about this sire and feel like his combination of eye appeal, maternal, muscle and easy fleshing genetics is next-level good.
- Dam is a beautiful, gentle Concho 008 daughter who has a bright future ahead of her.

80

HEIFER BULL

GA External Law N310

Reg: 21327026 DOB: 3/27/25 Tattoo: N310

BLAIR'S EXTERNAL LAW
RD EXTERNAL LAW L99
SAW BANKNOTE EMPRESS 702

COLE CREEK CEDAR RIDGE 1V
R44 BARBARAMERE JET 764
R44 BARBARAMERE JET 469

DUFF NAPOLEON 232
BAR-E-L ERICA 74A
BROOKING BANK NOTE 4040
SAW EMBLAZON 419 921 140

COLE CREEK BLACK CEDAR 46P
COLE CREEK CLOVANADA 49S
GDAR GAME DAY 449
R44 BARBARAMERE JET 261

Act. BW	Adj. 205 Wt	ADG	NR	Dam NR
73	708	3.10	101%	7 @ 101%

Reference Sire

- Tremendous birth to weaning spread on this heifer bull. Genomics rank calving ease direct and birth weight in top 10% of the breed. This guy is a tick more nervous.
- Dam's teats, udder and feet are ideal.





GA External Law N379

Reg: Not Reg

DOB: 3/29/25

Tattoo: N379

BLAIR'S EXTERNAL LAW
RD EXTERNAL LAW L99
SAW BANKNOTE EMPRESS 702

OX BOW CHARLOW 5219
ROCKING DOT F590
ROCKING DOT Z237

DUFF NAPOLEON 232
BAR-E-L ERICA 74A
BROOKING BANK NOTE 4040
SAW EMBLAZON 419 921 140
COLEMAN CHARLO 0256
OX BOW BLACKCAP LADY 397
ROCKING DOT COMMERCIAL
ROCKING DOT 2124

Act. BW	Adj. 205 Wt	ADG	NR	Dam NR
83	739	3.20	104%	6 @ 101%

- Check out this grass converting machine! Genomics rank his dry matter intake in top 25% of the breed.
- Dam is a true gem with perfect teats and udder. The 5219 daughters are beautifully made, productive females. Maternal brother went to Mauws Ranch in our 2024 sale.



GA 4Real N742

Reg: 21327058

DOB: 4/15/25

Tattoo: N742

DUFF-JC 4REAL 16250
S&R 4 REAL 202
S&R MS FINAL ANSWER 211

MOHNEN DAKOTA 2528
MONTANA JOY 0006
MONTANA JOY 8095

DUFF NAPOLEON 232
DUFF AMIGO 927K JUANADA 071
S A V FINAL ANSWER 0035
S&R MS PAXTON 706-945
S A V RAINFALL 6846
MOHNEN RUTH 972
S A V SEEDSTOCK 4838
BASIN JOY 1036

Act. BW	Adj. 205 Wt	ADG	NR	Dam NR
75	717	3.13	102%	4 @ 102%

- Really complete bull with plenty of muscle and rib shape. The 202 sons are powerful, masculine, and loaded with body capacity.
- Dam is super gentle and was purchased from Montana Ranch as a first calf heifer.



GA Genesis N293

Reg: 21327024

DOB: 3/26/25

Tattoo: N293

S C C GENESIS 847G
DUFF GENESIS 847G 22540
DUFF MERLE 190 460

R44 EMULATION 7756
R44 EISA EVERGREEN 162
R44 EISA EVERGREEN 755

DCC NEW LOOK 101
O C C JUANADA 927K
BAR WICK EUREKA 943 310
DUFF NE 319 MERLE 190
SINCLAIR EMULATION XXP
OX BOW BLACKCAP 756
OX BOW CEDAR RIDGE 2230
R44 EISA EVERGREEN 251

Act. BW	Adj. 205 Wt	ADG	NR	Dam NR
82	705	2.97	98%	3 @ 101%

- Tick more frame on this smooth-made Genesis son. Genomics rank yearling weight, milk, and meat tenderness in top 15% of the breed.
- Dam is a feminine, productive Emulation X Cedar Ridge cow from Bryan Pike's program.



GA 4Real N337

Reg: 21326961

DOB: 3/28/25

Tattoo: N337

DUFF-JC 4REAL 16250
S&R 4 REAL 202
S&R MS FINAL ANSWER 211

SINCLAIR CCR 2D53
RD LASS E189
RD GIGANTIC LASS Z456

DUFF NAPOLEON 232
DUFF AMIGO 927K JUANADA 071
S A V FINAL ANSWER 0035
S&R MS PAXTON 706-945
SINCLAIR FORTUNATE SON
MAYMONT CALLIE JANET 4512
RD FINAL KARAMA 22W
GA LASS EMULATION S446

Act. BW	Adj. 205 Wt	ADG	NR	Dam NR
91	727	3.10	101%	7 @ 100%

- This bull has got it all--depth of body, length of spine, and masculinity. Genomics rank him in top 3% for dry matter intake and top 23% for ribeye area.
- Dam is a powerful, quiet, and productive Sinclair Fortunate Son granddaughter. Maternal brothers have gone to Mauws Ranch in 2021, Meadow Creek Ranch in 2022, and Kiehl Ranch in 2024.



GA Honcho N541

Reg: 21326984

DOB: 4/5/25

Tattoo: N541

DUFF HONCHO 426
RD HONCHO J66
RD DONNA G337

COLEMAN BRAVO 6313
RD MANOR H151
RD MANOR C26

BAR WICK EUREKA 943 310
DUFF BI 619 LADYPOP 1017
REDLAND RANGER 164
DONNA OF THISTLEDEW 1EN1
COLEMAN CHARLO 0256
COLEMAN DONNA 714
SINCLAIR PREVIEW 1TL25
OX BOW MANOR 3178

Act. BW	Adj. 205 Wt	ADG	NR	Dam NR
79	751	3.28	107%	4 @ 105%

- Big spread birthweight to weaning weight. Genomics rank foot claw and angle and meat tenderness scores in the top 10% of the breed.
- Bravo dam is wedge-shaped and feminine with production 4 @ 105%. Grandam still in production with 9 @ 106% nursing ratio.

Lot 82

Yearling Bulls



GA Renovation N525

Reg: 21327041

DOB: 4/4/25

Tattoo: N525

S A V RENOVATION 6822
S&R RENOVATION 6822-257
MF/EBY EVER ENTENSE Y726

COLEMAN BRAVO 6313
S&R MS BRAVO 6313-114
S&R MS THUNDER 528

S A V RENOWN 3439
S A V MADAME PRIDE 0151
O C C MISSING LINK 830M
SHADYBROOK EVER ENTENSE 491G
COLEMAN CHARLO 0256
COLEMAN DONNA 714
CONNEALY THUNDER
S&R MS CAPITALIST 028-351

Act. BW	Adj. 205 Wt	ADG	NR	Dam NR
95	760	3.12	102%	3 @ 105%

- Incredible muscle and growth in this stout, rugged herd bull. Phenotypically he is tough to fault.
- His genomic marbling score ranks in top 2% of the breed.
- Dam is starting her career with an impressive production record - 3 @ 105%. Really no surprises here with the 528 matriarch as the grandam.



GA Robust N365

Reg: 21327030

DOB: 3/29/25

Tattoo: N365

BC ROBUST 0807
DUFF ROBUST 0807 22522
DUFF MIRANDA 1074 18515

O C C CORTEZ 819C
R44 LUCY 151
R44 LUCY 350

BC SURVEYOR 680D
BC 327-8 CP BELLE 0-807
DUFF HONCHO 426
DUFF MISS MIRANDA 9141 1074
O C C BIG TIME 746Z
O C C DIXIE ERICA 680W
GDAR GAME DAY 449
OX BOW LUCY 112

Act. BW	Adj. 205 Wt	ADG	NR	Dam NR
83	668	2.78	95%	3 @ 100%

- Performance and maternal in a predictable package with Robust/Honcho/Cortez/Game Day. We like to take the guess work out of breeding cattle!



GA Mission N185

Reg: 21354547

DOB: 3/20/25

Tattoo: N185

COLEMAN CHARLO 0256
COLEMAN MISSION 1447
COLEMAN DONNA 439

OX BOW MISSING LINK 1305
RD PETUNIA B238
RD PETUNIA Y219

O C C PAXTON 730P
BOHI ABIGALE 6014
GDAR GAME DAY 449
COLEMAN DONNA 714
O C C MISSING LINK 830M
OX BOW FOREVER LADY 998
ESHELMANS MAX TOT/861
G A COMMODORE PETUNIA 1375

Act. BW	Adj. 205 Wt	ADG	NR	Dam NR
78	719	3.02	99%	10 @ 100%

- Striking profile on this long-spined Mission heifer bull. He ranks in the top 10% of the breed for calving ease direct and birth weight. He has top genomic rankings for dry matter intake, scrotal, and meat tenderness as well.
- Beautiful maternal design on his quiet dam who indexes 10 @ 100%.

R44 BARBARAMERE JET 868



Dam of Lot 89



GA External Law N406

Reg: 21327034

DOB: 3/31/25

Tattoo: N406

BLAIR'S EXTERNAL LAW
RD EXTERNAL LAW L99
SAW BANKNOTE EMPRESS 702

O C C JET STREAM 825J
R44 BARBARAMERE JET 868
R44 BARBARAMERE JET 651

DUFF NAPOLEON 232
BAR-E-L ERICA 74A
BROOKING BANK NOTE 4040
SAW EMBLAZON 419 921 140
O C C EMBLAZON 854E
O C C JUANADA 968G
R44 CEDAR RIDGE 3164
OX BOW BARBARAMERE JET 5129

Act. BW	Adj. 205 Wt	ADG	NR	Dam NR
89	698	2.97	98%	6 @ 98%

- Great External Law bull whose genomics rank in the top 18% of the breed for dry matter intake.
- L99 sire sold in last year's sale to C & C Excavation. We used him in natural service in 2024 and he sired some of the standout calves of the 2025 calf crop.
- Dam is an attractive Jet Stream daughter with excellent teats and udder.



GA 4Real N385

Reg: 21326967

DOB: 3/30/25

Tattoo: N385

DUFF-JC 4REAL 16250
S&R 4 REAL 202
S&R MS FINAL ANSWER 211

SINCLAIR CCR 2D53
RD ERICA E107
RD SHADY LADY W159

DUFF NAPOLEON 232
DUFF AMIGO 927K JUANADA 071
S A V FINAL ANSWER 0035
S&R MS PAXTON 706-945
SINCLAIR FORTUNATE SON
MAYMONT CALLIE JANET 4512
BASIN PAYWEIGHT 342R
GA ERICA EMULATION S886

Act. BW	Adj. 205 Wt	ADG	NR	Dam NR
85	747	3.23	105%	7 @ 104%

- Loaded with performance and style.
- Maternal brothers sold in 2021, 2022, and 2023 to Three Bar Ranch, Montana Mexican John, and Mundt Ranch respectively.



Two Year Old Bulls

These exceptional two-year-old bulls were used in natural service this past year to breed our cows. They were carefully selected based on their superior phenotype, genetic merit, and performance. With age advantage and breeding experience, these bulls are ready to go to work for you. We will charge \$500 per head if you would like us to winter them for you. If wintered, they will have a second breeding soundness examination performed in the spring.



GA 4 Real LTB M243

Reg: 21070513 DOB: 3/29/24 Tattoo: M243
DUFF NAPOLEON 232 DUFF DISTINCTION 9105
DUFF-JC 4REAL 16250 DUFF EUR 443 MERLE 808
DUFF AMIGO 927K JUANADA 071 DUFF AMIGO 815
O C C PAXTON 730P O C C JUANADA 927K
OX BOW MISS WIX 415 O C C FOCUS 813F
OX BOW MISS WIX 219 O C C BLACKBIRD 736K
SA V FINAL ANSWER 0035
OX BOW MISS WIX 0181

Act. BW	Adj. 205 Wt	ADG	NR	Year Wt	Yrlg Scrotal	Dam NR
85	742	3.1	106%	1225	38	10 @ 101%

- "Lower The Boom" also known as LTB is a real sale feature!
- Big time herd bull that is very easy going. This bull is an absolute meat wagon and stands on excellent feet and legs. He is masculine and loaded with performance. LTB was used to AI and naturally breed registered cows to this summer.
- His 11 -year-old Paxton dam is an elite female that we have flushed. She has incredible depth of rib and forage efficiency with good teats, udder, and feet.
- It was not an easy decision to let this bull go, and we would like to collect him again next Spring (at our expense). We are selling 1/2 interest and full possession.



S&R-MS-THUNDER-422



Maternal Granddam of Lot 92



GA 4 Real M244

Reg: 21070587

DOB: 3/29/24

Tattoo: M244

DUFF NAPOLEON 232
DUFF-JC 4REAL 16250
DUFF AMIGO 927K JUANADA 071

S&R STUR-D 511
S&R MS STUR-D 511-7105
S&R MS THUNDER 422

DUFF DISTINCTION 9105
DUFF EUR 443 MERLE 808
DUFF AMIGO 815
O C C JUANADA 927K
HARB STUR-D 191 JH
S&R MS FINAL ANSWER 031
CONNEALY THUNDER
S&R MS TRANSMITTER 023

Act. BW	Adj. 205 Wt	ADG	NR	Year Wt	Yrlg Scrotal	Dam NR
83	694	2.98	102%	1170	35	7 @ 99%

- Real attractive pattern to this 4Real son. These 4Reals have incredible dispositions and stand on excellent feet and legs.
- Maternal grandam 422 was sold to Bulgaria and has been a phenomenal embryo producer. Her offspring are highly marketable due to their consistency in producing powerful performance. Simply can't go wrong here!



GA Resource M274

Reg: 21070515

DOB: 3/31/24

Tattoo: M274

S A V RESOURCE 1441
COLEMAN RESOURCE 708
COLEMAN DONNA 376

SINCLAIR CCR 2D53
RD LASS C350
RD GIGANTIC LASS Z456

RITO 707 OF IDEAL 3407 7075
S A V BLACKCAP MAY 4136
COLEMAN MANNING 0299
COLEMAN DONNA 005
SINCLAIR FORTUNATE SON
MAYMONT CALLIE JANET 4512
RD FINAL KARAMA 22W
GA LASS EMULATION S446

Act. BW	Adj. 205 Wt	ADG	NR	Year Wt	Yrlg Scrotal	Dam NR
89	807	3.5	120%	1165	36.5	9 @ 104%

- If you have been wanting a top performing 708 son, here is your chance. This stud will sire scale-smashing steer calves and leave you with some fancy heifers to turn into mother cows. The extra muscle, growth, and red meat here is undeniable.
- Dam is a powerhouse 10 year-old-cow with an impressive production record of 9 @ 104% nursing ratio.



GA Concho M882

Reg: Not Reg

DOB: 5/4/24

Tattoo: M882

DUFF HONCHO 426
G&L CONCHO 008
FAIRVIEW DONNA 2268

V D A R CEDAR WIND 8111
ROCKING DOT 605
ROCKING DOT COMMERCIAL COW

BAR WICK EUREKA 943 310
DUFF BI 619 LADYPOP 1017
LEACHMAN RIGHT TIME
DONNA OF THISTLEDEW 757
COLE CREEK CEDAR RIDGE 1V
V D A R CHLOE 9727

Act. BW	Adj. 205 Wt	ADG	NR	Year Wt	Yrlg Scrotal	Dam NR
83	673	2.88	95%	1050	37.5	8 @ 99%

- Excellent 008 bull that ranks in the top 14% of the breed for dry matter intake, top 4% for scrotal, and top 23% for meat tenderness. This guy should really produce some nice females.
- Dam is a beautiful Cedar Wind daughter with perfect teats, udder, and feet.

FAIRVIEW-111-BARB-NELL-251Y



Dam of Lot 95



GA 4 Real M610

Reg: 21070533

DOB: 4/17/24

Tattoo: M610

DUFF-JC 4REAL 16250
DUFF 4REAL 16250 20521
DUFF EB 841M DIXIEERICA 1120

DUNLOUISE JIPSEY EARL E161
FAIRVIEW 111 BARB NELL 251Y
SITZ BARBARAMERE NELL 429M

DUFF NAPOLEON 232
DUFF AMIGO 927K JUANADA 071
DUFF E BLAST 8138
O C C DIXIE ERICA 841M
BETRO OF CLASSLOCHIE
DUNLOUISE JIPSEY CLOVA C095
BASIN RAINMAKER 654X
SITZ BARBARAMERE NELL 1623

Act. BW	Adj. 205 Wt	ADG	NR	Year Wt	Yrlg Scrotal	Dam NR
88	686	2.81	97%	1060	36	12 @ 95%

- Soggy, robust beef bull. Genomics rank dry matter intake in top 7% of the breed and meat tenderness in top 18%.
- Thirteen year old Jipsey Earl dam is a gem that we purchased from FairView dispersion. She consistently weans 60% of her body weight.



GA Law M162

Reg: 21070579

DOB: 3/26/24

Tattoo: M162

DUFF NAPOLEON 232
BLAIR'S EXTERNAL LAW
BAR-E-L ERICA 74A

S&R STUR-D 511-763
S&R MS STUR-D 763-077
S&R MS PREDESTINED 834

DUFF DISTINCTION 9105
DUFF EUR 443 MERLE 808
BAR-E-L NATURAL LAW 52Y
HF ERICA 339T
S&R STUR-D 511
S&R MS PAXTON 190 - 920
G A R PREDESTINED
S&R MS EMBLAZON 413

Act. BW	Adj. 205 Wt	ADG	NR	Year Wt	Yrlg Scrotal	Dam NR
77	635	2.65	94%	1105	37	4 @ 97%

- Deep-ribbed, easy fleshing heifer bull designed to shine in a low input environment.
- Dam is a productive, fertile Stur-D daughter. Grandam still in production with 6 @ 103% nursing ratio.



Two Year Old Bulls

RD HONCHO J163

Sire of Lot 97

RD RANGER F654

Sire of Lot 99

**GA Honcho M331**

Reg: 21070522 DOB: 4/2/24 Tattoo: M331

DUFF HONCHO 426
RD HONCHO J163
 RD LASS E19

COLEMAN RESOURCE 708
RD ERICA J455
 RD ERICA B169

BAR WICK EUREKA 943 310
 DUFF BI 619 LADYPOP 1017
 SINCLAIR TIMELESS 8BA4
 RD LASS C350
 S A V RESOURCE 1441
 COLEMAN DONNA 376
 OX BOW EXTRA 1337
 GA ERICA EMULATION S886

Act. BW	Adj. 205 Wt	ADG	NR	Year Wt	Yrlg Scrotal	Dam NR
80	703	2.86	106%	1100	36	3 @ 108%

- Really good Honcho J163 son whose genomics rank in the top 20% of the breed for weaning weight, yearling weight, and ribeye area. He was used to breed registered cows this summer also.
- His dam is a beautiful 708 daughter with excellent, teats, udder, and feet and production record of 3 @ 108%. We made an exception to only flushing cows around 10 years of age with her--she's that good!

RD ERICA J455

Dam of Lot 97

**GA Do It All M769**

Reg: Not Reg DOB: 4/27/24 Tattoo: M769

O C C DO IT ALL 656D
REDLAND DO IT ALL 140
 REDLAND 524

WLE UNO MAS X549
ROCKING DOT 4114
 ROCKING DOT COMMERCIAL COW

O C C ZODIAC 655Z
 O C C DIXIE ERICA 827A
 COLE CREEK CEDAR RIDGE 1V

CNS DREAM ON L186
 SHAWNEE MISS 770P

Act. BW	Adj. 205 Wt	ADG	NR	Year Wt	Yrlg Scrotal	Dam NR
83	735	3.07	100%	1045	36.5	10 @ 103%

- Solid built bull out of our Do It All 140 herd bull. Genomics rank dry matter intake in top 14% of the breed. Great genetics for a forage-based environment.
- Dam is a feminine, long-made cow with excellent teats and udder and production 10 @ 103% nursing ratio.

**GA Ranger M528**

Reg: 21076988 DOB: 4/13/24 Tattoo: M528

REDLAND RANGER 164
RD RANGER F654
 FAIRVIEW BLACK BESS 3111

V D A R WIND BREAK 7062
S&R MS WIND BREAK 7062-699
 S&R MS CHISUM 228-463

O C C PAXTON 730P
 REDLAND PRIDE 138
 HARB STUR-D 191 JH
 FAIRVIEW BLACK BESS W204
 V D A R REALLY WINDY 4097
 V D A R LASS 0307
 S&R CHISUM 228
 S&R MS RETAIL PRODUCT 643

Act. BW	Adj. 205 Wt	ADG	NR	Year Wt	Yrlg Scrotal	Dam NR
83	739	3.2	107%	1160	34	7 @ 106%

- Top performing F654 bull that indexed 107%. Sire F654 has risen to the top as an elite herd bull in our program. At 7 years of age, he has maintained excellent feet and soundness in an incredible deep-bodied, muscular frame. His daughters are impressive to look at and most importantly fertile and productive.
- Wind Break dam 699 is deep-bodied and productive with nursing ratio 7 @ 106%.

**GA Carried Away M509**

Reg: 21070529 DOB: 4/12/24 Tattoo: M509

DUFF CARRIED AWAY 1882
RD CARRIED AWAY J93
 COLEMAN JUANADA 6441

COLEMAN RESOURCE 708
RD LUCY H158
 RD LUCY Y2

DUFF CARRY ON 252
 DUFF FL 443 MERLE 867
 COLEMAN KNIGHT 209
 COLEMAN JUANADA 1509
 S A V RESOURCE 1441
 COLEMAN DONNA 376
 SQ CREDENCE 67S
 BASIN LUCY 14U1

Act. BW	Adj. 205 Wt	ADG	NR	Year Wt	Yrlg Scrotal	Dam NR
89	703	2.92	98%	1090	35.5	4 @ 100%

- Phenotypic quality and structural excellence in this Carried Away bull. Genomics rank in top 15% of the breed for dry matter intake and foot claw and angle scores.
- Dam is another highly regarded 708 daughter with production 4 @ 100%.

**GA Renown M864**

Reg: Not Reg DOB: 5/3/24 Tattoo: M864

S A V RENOWN 3439
COLEMAN RENOWN 937
 COLEMAN DONNA 5319

O C C CORTEZ 819C
ROCKING DOT 906
 ROCKING DOT COMMERCIAL COW

RITO 707 OF IDEAL 3407 7075
 S A V BLACKCAP MAY 4136
 COLEMAN CHARLO 0256
 COLEMAN DONNA 3213
 O C C BIG TIME 746Z
 O C C DIXIE ERICA 680W

Act. BW	Adj. 205 Wt	ADG	NR	Year Wt	Yrlg Scrotal	Dam NR
89	694	2.95	98%	1060	35	5 @ 99%

- This bull checks all the boxes--maternal and performance.
- Dam has excellent feet, teats, and udder and is really doing a nice job with 5 @ 99% nursing ratio.

102

GA Emulation M183

Reg: 21076904

DOB: 3/26/24

Tattoo: M183

R44 EMULATION 7756
R44 EMULATION 0354
R44 EISA EVERGREEN 354

SINCLAIR EMULATION XXP
OX BOW BLACKCAP 756
GDAR GAME DAY 449
SITZ RLS EISA EVERGREEN 715R
COLEMAN CHARLO 0256
COLEMAN DONNA 197
GA EMULATION TRAVELER 26S
GA PETUNIA DATELINE S826

COLEMAN CHARLO 7177
RD PETUNIA J91
RD EMULATION PETUNIA X129

Act. BW	Adj. 205 Wt	ADG	NR	Year Wt	Yrlg Scrotal	Dam NR
86	689	2.76	102%	1050	34	3 @ 98%

- Moderate-framed 0354 son that ranks in the top 14% of the breed for ribeye area.
- Dam is an easy-fleshing young Charlo daughter off to a good start.

103

GA 4Real M612

Reg: Not Reg

DOB: 4/16/24

Tattoo: M612

DUFF-JC 4REAL 16250
DUFF 4REAL 16250 20521
DUFF EB 841M DIXIEERICA 1120

DUFF NAPOLEON 232
DUFF AMIGO 927K JUANADA 071
DUFF E BLAST 8138
O C C DIXIE ERICA 841M
ROCKING DOT PAYWEIGHT
ROCKING DOT U77
ROCKING DOT COMMERCIAL
ROCKING DOT U356

ROCKING DOT A9
ROCKING DOT E517
ROCKING DOT Y176

Act. BW	Adj. 205 Wt	ADG	NR	Year Wt	Yrlg Scrotal	Dam NR
89	666	2.81	95%	1055	37.5	7 @ 102%

- Serious amount of muscle and mass in this top 4Real 20521 son. We calved our first 20521 daughters this last spring and they were exceptional. Nice, big broody heifers with ideal udders and excellent feet.
- Dam E517 is an absolute favorite on the ranch with excellent teats, udder, and feet.

ROCKING DOT H78



Dam of Lot 104

104

GA Concho M970

Reg: Not Reg

DOB: 5/13/24

Tattoo: M970

DUFF HONCHO 426
G&L CONCHO 008
FAIRVIEW DONNA 2268

BAR WICK EUREKA 943 310
DUFF BI 619 LADYPOP 1017
LEACHMAN RIGHT TIME
DONNA OF THISTLEDEW 757
O C C TREMENDOUS 619T
O C C EMBLAZON 854E
O C C DIXIE ERICA 960H
COLEMAN CHARLO 0256
ROCKING DOT D218

O C C TREMENDOUS 619T
ROCKING DOT H78
ROCKING DOT F5

Act. BW	Adj. 205 Wt	ADG	NR	Year Wt	Yrlg Scrotal	Dam NR
82	724	3.06	101%	1075	35	4 @ 97%

- Libby's bull. Here's your ticket for genetics that will flat work in a forage-based environment with Honcho/O C C Tremendous/ Charlo in the pedigree. Genomics rank him in top 2% of the entire breed for dry matter intake.
- Dam is deep-bodied model Angus cow that is easy fleshing and maternal.

105

GA Ranger M1040

Reg: 21070538

DOB: 5/27/24

Tattoo: M1040

REDLAND RANGER 164
RD RANGER F654
FAIRVIEW BLACK BESS 3111

SINCLAIR TIMELESS 8BA4
GA PRIMROSE E59
GA PRIMROSE C30

O C C PAXTON 730P
REDLAND PRIDE 138
HARB STUR-D 191 JH
FAIRVIEW BLACK BESS W204
SINCLAIR IN TIME 6BT39
SINCLAIR BLACKBIRD 2P8 7079
OX BOW FINAL ANSWER 1304
GA PRIMROSE YELLOWSTONE 655

Act. BW	Adj. 205 Wt	ADG	NR	Year Wt	Yrlg Scrotal	Dam NR
85	773	3.36	121%	1180	36	7 @ 110%

- Rugged-made performance bull. This bull indexed 121% and gained 3.36 pounds per day on his dam native grass! He ranked in the top 1% of the entire breed for meat tenderness.
- His sweet 8BA4 dam gets it done year-in and year-out with a NR of 7 @ 110%.



110 Pick of Registered Heifer Calves

Opportunity to "cherry pick" a 2025-born heifer calf from the entire Gaugler Angus herd consisting of 210 registered Angus heifer calves. Information on heifers available by request.

The winning bidder must finalize their selection prior to January 1, 2026.



- Buyer is responsible for taking delivery of females within 1 week of sale.
- Females will sell in lot tag order with minimum purchase of 10 head.
- All females are bangs vaccinated.
- These females are all cake broke and are easy to handle on foot, horseback, and ATV.

111-130

20 elite coming 3-year-old bred commercial Angus cows (Born 2023)

- These females are the "cream of the crop" and represent our breeding program.
- Every cow has weaned a good calf (96-112% nursing ratio). Several of these cows have top bulls in our sale.
- Due to calve in the first 15 days of breeding season (due March 25, 2026).
- Pasture bred to Gaugler Angus herd sires.
- Vaccinated with Bovi-shield Gold FP5 VL5 in September/October 2023 at the time of ultrasound.
- Confirmed bred early December and poured with Dectomax.

131-170

40 commercial Angus bred heifers from the heart of our herd

- AI'd 6/6-6/12 to Redland Do It All 68 and Ideal 0026 Rito of REN, and cleaned-up with Bravo, Charlo, and Renown sons.
- Due to calve starting March 9, 2026 for 20 days.
- Vaccinated with Bovi-shield Gold FP5 VL5 at pregnancy check.
- Confirmed bred early December and poured with Dectomax.

171-210

40 commercial Angus extra fancy heifer calves

- These heifers come straight out of our replacement pen. We have a really big sort on these and truly believe these young females will make exceptional cows.
- Vaccinated with Bovi-shield Gold FP5 VL5 and poured with Dectomax in November.
- We will supply semen on one of our calving ease herd bulls should the buyer chose to AI them next spring.



Reference Sires

Coleman-Mission-1447



Reference
Sire

Coleman Mission 1447

Reg: +*20500595 DOB: 6/27/21 Tattoo: 1447

O C C PAXTON 730P
COLEMAN CHARLO 0256
BOHI ABIGALE 6014

GDAR GAME DAY 449
COLEMAN DONNA 439
COLEMAN DONNA 714

O C C FOCUS 813F
O C C BLACKBIRD 736K
SITZ TRAVELER 8180
S A V ABIGALE 6062
BOYD NEW DAY 8005
G D A R MISS WIX 474
CONNEALY ONWARD
COLEMAN DONNA 386

CED	BW	WW	YW	Milk	CW	Marb	RE
+11	-0.2	+50	+99	+36	+35	+22	+45

- Coleman Mission 1447 was the \$55,000 feature in the 2023 Coleman Angus Bull Sale and our pick of the Coleman offering.
- He has exceptional phenotype in a moderate low input package, with added muscle shape, and body.
- He is a son of the Pathfinder Sire, Coleman Charlo 0256, back to the dam of the \$270,0000 record selling Coleman Glacier 041, Coleman Donna 439.
- Semen available.

Duff-JC-4Real-16250



Reference
Sire

Duff-JC 4Real 16250

Reg: +*18983584 DOB: 2/24/16 Tattoo: 16250

DUFF DISTINCTION 9105
DUFF NAPOLEON 232
DUFF EUR 443 MERLE 808

DUFF AMIGO 815
DUFF AMIGO 927K JUANADA 071
O C C JUANADA 927K

DUFF BASIC INSTINCT 6501
DUFF NL B351 LADY POP 619
DUFF NEW EDITION 6108
DCC NL 652K MERLE 443
DUFF NEW EDITION 6108
DCC NL 652K MERLE 443
O C C EMBLAZON 854E
O C C JUANADA 624G

CED	BW	WW	YW	Milk	CW	Marb	RE
+6	+1.0	+59	+102	+18	+19	+0.1	+64

- Will add muscle, length of body, style, massive rib shape, and excellent foot structure.
- His daughters are super feminine with a ton of capacity.
- His sons are powerful, very masculine, loaded with rib and body.

Ideal-0026-Rito-of-REN



Reference
Sire

Ideal 0026 Rito of REN

Reg: *19888476 DOB: 2/9/20 Tattoo: 0026

RITO 707 OF IDEAL 3407 7075
S A V RENOWN 3439
S A V BLACKCAP MAY 4136

COLEMAN EMBLAZON 0116
IDEAL 7005 OF 0116 ERILOU
IDEAL 5724 OF 9524 ERILOU

R R RITO 707#
IDEAL 3407 OF 1418 076
S A V 8180 TRAVELER 004
S A V MAY 2397

O C C EMBLAZON 854E
BOHI LADY 1165
IDEAL 9524 OF 5570 6809
IDEAL 7538 OF 3542 4683

CED	BW	WW	YW	Milk	CW	Marb	RE
+6	-0.8	+59	+114	+27	+43	+1.8	+51

- 0026 is moderate framed, thick-made and easy fleshing with excellent feet. He is owned by Shipwheel Angus, who has bred him to hundreds of heifers over the years with great success. His daughters are outstanding.

Redland-Do-It-All-68



Reference
Sire

Redland Do It All 68

Reg: 20767582 DOB: 3/14/22 Tattoo: 68

O C C ZODIAC 655Z
O C C DO IT ALL 656D
O C C DIXIE ERICA 827A

GDAR GAME DAY 449#
REDLAND LASS 570
REDLAND LASS 616

O C C UMAX 820U
O C C DIXIE ERICA 628W
O C C PAXTON 730P#
O C C DIXIE ERICA 771R
BOYD NEW DAY 8005#
G D A R MISS WIX 474#
O C C EMBLAZON 854E#
REDLAND LASS 465

CED	BW	WW	YW	Milk	CW	Marb	RE
+9	-0.3	+35	+64	+21	+3	+5.8	+44

- Our selection from Redland Angus in 2023. 68 is masculine, athletic, virile, and forage efficient in a calving ease package. His dam is a massive-bodied, highly productive female still in production at 15-year-old.
- Semen available.

Reference Sires

Blair's External Law



Reference
Sire

Blair's External Law

Reg: +*19639203 DOB: 2/16/18 Tattoo: 266F

DUFF DISTINCTION 9105
DUFF NAPOLEON 232
DUFF EUR 443 MERLE 808

BAR-E-L NATURAL LAW 52Y
BAR-E-L ERICA 74A
HF ERICA 339T

DUFF BASIC INSTINCT 6501
DUFF NL B351 LADY POP 619
DUFF NEW EDITION 6108
DCC NL 652K MERLE 443
S A V BISMARCK 5682
BAR-E-L MAGNOLIA 143K
PEAK DOT FAME 2N
HF ERICA 46P

CED	BW	WW	YW	Milk	CW	Marb	RE
+3	+2.3	+61	+90	+18	+29	-.22	+.68

- External Law's phenotype is second to none with massive hip, extreme amount of rib and body, bone and stands on perfect feet.
- Son of Duff Napoleon by the leading lady Bar-E-L Erica 74A (Natural Law daughter).
- He has an amazing pedigree that is outcross and loaded with real maternal.

Coleman-Resource-708



Reference
Sire

Coleman Resource 708

Reg: *18933681 DOB: 1/11/17 Tattoo: 708

RITO 707 OF IDEAL 3407 7075
S A V RESOURCE 1441
S A V BLACKCAP MAY 4136

COLEMAN MANNING 0299
COLEMAN DONNA 376
COLEMAN DONNA 005

R R RITO 707
IDEAL 3407 OF 1418 076
S A V 8180 TRAVELER 004
S A V MAY 2397
O C C JUNEAU 807J
COLEMAN DONNA 714
N BAR SHADOW X4124
COLEMAN DONNA 386

CED	BW	WW	YW	Milk	CW	Marb	RE
+5	+0.2	+61	+106	+18	+43	+.26	+.41

- Our selection from Coleman Angus in 2018.
- 708 is a clean fronted, long-bodied, outstanding Resource son out of a Donna cow.
- He is loaded with muscle and stands on perfect feet and legs.
- His daughters have exceeded all expectations--nice mothers with ideal teats and udder.

Duff Honcho 426



Reference
Sire

Duff Honcho 426

Reg: *18135257 DOB: 2/20/14 Tattoo: 426

O C C EUREKA 865E
BAR WICK EUREKA 943 310
O C C DIXIE ERICA 943D

DUFF BASIC INSTINCT 6501
DUFF BI 619 LADYPOP 1017
DUFF NL B351 LADY POP 619

O C C BACKSTOP 888B
BLACKBIRD OF R R 1204
RITO 9FB3 OF 5H11 FULLBACK
DIXIE ERICA OF R R 9275
O C C MISSING LINK 830M
O C C DIXIE ERICA 814G
DCC NEW LOOK 101
E&B LADY POPATOP 351

CED	BW	WW	YW	Milk	CW	Marb	RE
+7	-0.2	+45	+66	+18	+7	-.24	+.27

- Proven calving ease sire.
- Honcho adds massive body and depth in an extreme grass efficient package. He has an excellent phenotype, perfect long level hip, and is great on his feet and legs.
- We have several Honcho daughters in production and they are model Angus cows-beautiful fronted, deep-ribbed, with excellent teats and udder.



How do you Ballyhoo?
With this catalog
and so much more!

Ballyhoo
PRINTING & DESIGN
BallyhooPrinting.com
406•538•7988 Lewistown, MT



Yovanni



Libby and Lila

SPECIAL THANKS TO:

Grandma Paulie for making it all possible!

Papa Steve and Jim and Sarah for help running kids around.

Our ranch help especially, Yovanni, Jordi, Moises, Paul, Isaac, Daniel, Tyler, Bergum family, Olson family, Will, Cindy, and Emily.

Liesl Holtz with Advanced Records Management, LLC for helping with registrations, DNA submissions, catalog, and everything records related!

Kate Loose for pictures and video.

Gerri Campbell and Ballyhoo Printing for help with catalog and ads.

Debbie Rankin and Brooks Market for catering lunch and the Judith Gap FFA chapter for serving.



Jordi



Moises



Paul



Shipping Crew





Mark & Laurie Gaugler

406-690-1546

PO Box 195 • Judith Gap, MT 59453

Mark 406-690-1546

Laurie 406-366-4041

Ray 406-351-9283

FIRST CLASS

US Postage
Paid
Ballyhoo Printing
59457

FIRST CLASS

PRODUCTION SALE with Ray Gardner

Saturday December 13th, 2025

1:00 pm • Judith Gap, Montana



Featured Sires

Coleman Mission 1447 • Redland Do It All 68 • Ideal 0026 Rito of REN

Duff-JC 4Real 16250 • Blair's External Law • Coleman Resource 708

Duff Honcho 426



GauglerAngus.com